





Enhanced branched-chain amino acid metabolism improves age-related reproduction in *C. elegans*

Received: 4 June 2023

Accepted: 25 January 2024

Published online: 28 February 2024

 Check for updates


Chen Lesnik ^{1,2,3,6}, Rachel Kaletsky ^{1,2,6}, Jasmine M. Ashraf^{1,2}, Salman Sohrabi^{2,4}, Vanessa Cota^{1,2,5}, Titas Sengupta^{1,2}, William Keyes^{1,2}, Shijing Luo^{1,2} & Coleen T. Murphy ^{1,2} 

Reproductive ageing is one of the earliest human ageing phenotypes, and mitochondrial dysfunction has been linked to oocyte quality decline; however, it is not known which mitochondrial metabolic processes are critical for oocyte quality maintenance with age. To understand how mitochondrial processes contribute to *Caenorhabditis elegans* oocyte quality, we characterized the mitochondrial proteomes of young and aged wild-type and long-reproductive *daf-2* mutants. Here we show that the mitochondrial proteomic profiles of young wild-type and *daf-2* worms are similar and share upregulation of branched-chain amino acid (BCAA) metabolism pathway enzymes. Reduction of the BCAA catabolism enzyme BCAT-1 shortens reproduction, elevates mitochondrial reactive oxygen species levels, and shifts mitochondrial localization. Moreover, *bcat-1* knockdown decreases oocyte quality in *daf-2* worms and reduces reproductive capability, indicating the role of this pathway in the maintenance of oocyte quality with age. Notably, oocyte quality deterioration can be delayed, and reproduction can be extended in wild-type animals both by *bcat-1* overexpression and by supplementing with vitamin B1, a cofactor needed for BCAA metabolism.

The progressive inability to reproduce increases with age, typically starting in women's mid-30s, due to a decline in oocyte quality that precedes the onset of menopause by about 15 years^{1,2}. As the maternal age for first childbirth has risen in recent years³, understanding the mechanisms that regulate reproductive ageing has become increasingly important. Compared with other tissues, oocytes visibly age early in life^{1,4,5}, and the decline in oocyte quality with age limits reproduction⁵⁻⁹. The ability to reproduce late in life is determined by oocyte quality in multiple organisms¹⁰⁻¹², including humans, but the factors that regulate this quality decline with age, and whether

oocytes can be rejuvenated in older animals, remain unclear. As in humans, the model organism *Caenorhabditis elegans* undergoes reproductive ageing that is regulated by highly conserved genes and pathways that maintain oocyte quality with age⁹. Despite some dissimilarities in reproductive chronologies and strategies between *C. elegans* and humans, the cellular and molecular components that regulate reproductive ageing are surprisingly well conserved from worms to humans⁹. Both women and *C. elegans* have long post-reproductive lifespans, and both undergo significant reproductive ageing on proportional time scales¹³. Most notably, as in humans, oocyte quality

¹Department of Molecular Biology, Princeton University, Princeton, NJ, USA. ²LSI Genomics, Princeton University, Princeton, NJ, USA. ³Faculty of Natural Sciences, Department of Human Biology, University of Haifa, Haifa, Israel. ⁴Department of Bioengineering, University of Texas at Arlington, Arlington, TX, USA. ⁵Department of Biology, Tacoma Community College, Tacoma, WA, USA. ⁶These authors contributed equally: Chen Lesnik, Rachel Kaletsky.

 e-mail: ctmurphy@princeton.edu

is the critical factor for reproductive ageing in worms. We and others have ruled out the possibility that reproductive cessation is limited by oocyte number⁸, germline stem cells⁹, or apoptosis⁹. Instead, oocyte quality maintenance with age is the critical factor regulating reproductive ageing in both *C. elegans* and humans^{5,8,9}. We previously found that genes associated with chromosome segregation, cell cycle regulation, DNA damage, and mitochondrial decline in aged *C. elegans* oocytes (as in humans) and are critical for oocyte quality maintenance⁹. These genes are higher in young oocytes and in the oocytes of transforming growth factor (TGF)- β mutants, which display slowed reproductive ageing⁹. Many of these genes also change with age in mouse^{10,12} and human oocytes¹¹, underscoring the similarities in oocyte ageing across species.

The insulin/IGF-1 receptor (IIS) mutant *daf-2* provides a compelling model for identifying regulators of healthy ageing, as *daf-2* mutations extend lifespan¹⁴ and generally improve healthspan^{15,16}. The IIS pathway also plays a critical role in regulating the rate of reproductive decline in *C. elegans*^{9,13,17} by increasing oocyte quality^{9,18}. IIS and TGF- β pathways are evolutionarily conserved from worms to humans and are likely to be important in the regulation of human reproductive decline^{9,18}. The similarities in reproductive decline between humans and *C. elegans* make worms an excellent model for identifying mechanisms to improve reproductive longevity¹⁹.

Mitochondria are highly abundant in oocytes and may play a pivotal role in oocyte ageing^{20–22}. As human oocytes age, mitochondria activity and number decline, resulting in decreased oocyte quality⁵; however, it is not known whether dysfunction of mitochondrial metabolic pathways, rather than changes in number or morphology^{1,5,23–25}, directly regulate oocyte and reproductive ageing or merely correlate with age-related decline. Identifying mitochondrial proteins that change with age may reveal mechanisms that regulate oocyte quality maintenance. Notably, interventions aimed at altering aspects of mitochondrial function offer the possibility of slowing various aspects of ageing^{23,26,27}.

Exploiting the conserved features of reproductive ageing in *C. elegans*, we addressed these questions through a comparative proteomic analysis. Proteomic analysis of wild-type *C. elegans* revealed age-related changes in protein abundance²⁸, but which mitochondrial proteins regulate reproductive longevity are unknown. Here we profiled the mitochondrial proteome of aged wild-type animals and *daf-2* mutants, identifying ‘youthful’ mitochondria-related proteins. We found that the BCAA degradation pathway regulates reproductive ageing; the first enzyme of the pathway, BCAT-1, is important for maintaining normal characteristics of mitochondria in *daf-2* oocytes with age. Conversely, increasing BCAA pathway activity in wild-type worms improves oocyte quality and extends reproduction; both overexpression of *bcat-1* and supplementation with vitamin B1/thiamine, a cofactor needed for the BCAA pathway, extend late-mated reproduction. Our data link mitochondrial BCAA metabolism with oocyte quality maintenance and suggest that modulation of this pathway via vitamin B1/thiamine may be a strategy to promote reproductive health and longevity.

Results

Aged *daf-2* worms maintain ‘youthful’ mitochondria

To identify a set of ‘youthful’ mitochondria-associated proteins associated with *daf-2*'s extended reproductive span (Fig. 1a), we isolated mitochondria using biochemical fractionation and sequential centrifugation from young (day 1 adult) and reproductively aged (day 5 adult) wild-type worms and *daf-2(e1370)* mutants (Extended Data Fig. 1). Day 5 of adulthood marks the start of oocyte quality decline in wild-type worms, whereas both reproduction and high oocyte quality are maintained in *daf-2* animals. Liquid chromatography–tandem mass spectrometry (LC–MS/MS) proteomic analysis identified 1,469 proteins with a minimum of two peptides per protein and replication across a minimum of two out of three replicates (Supplementary

Table 1). Mitochondrial proteins from young wild-type and *daf-2* worms are most similar, whereas aged wild-type mitochondrial proteins differ (Fig. 1b), suggesting that *daf-2*'s mitochondrial proteomes undergo fewer changes in this period. Proteins that are significantly more abundant in the ‘*daf-2* and young wild-type mitochondria’ cluster than in aged wild-type mitochondria may be indicators of mitochondrial functions that are important for maintaining cellular properties or inhibiting age-related processes. While many proteins are more abundant in aged than young worms (Fig. 1c,d), we were interested in proteins that might be associated with improved health; therefore, we focused on proteins that are more abundant in young and *daf-2* animals (Fig. 1e and Supplementary Table 1). The top ‘young’ mitochondrial proteins (hypergeometric $P < 0.005$; Fig. 1e) include BCAT-1 (branched-chain aminotransferase), ACDH-1 (acyl-CoA dehydrogenase/*dod-12*), W10C8.5 (creatine kinase B), PCYT-1 (phosphocholine cytidyltransferase), and PHYH-1 (phytanoyl-CoA hydroxylase) (Fig. 1e). Notably, two of these proteins are enzymes in the BCAA degradation pathway, suggesting that this pathway could be important for maintaining mitochondrial function with age; BCAT-1, an orthologue of human BCAA transaminase BCAT-1 and BCAT2, is localized to mitochondria in *C. elegans*²⁹, and ACDH-1 is an orthologue of human acyl-CoA dehydrogenase short/branched chain.

The *C. elegans* germline contains the majority of mitochondrial DNA in the adult worm³⁰, consistent with the energy-intensive role of the germline in reproduction^{30–32}. To determine whether the top five ‘youthful’ mitochondrial proteins identified from our proteomic analysis are important for maintaining *daf-2*'s reproduction with age, we tested whether reduction of these genes reduces the late-mated reproduction of aged *daf-2* worms (Fig. 1f). Knockdown of three candidates had either no effect (*W10C8.5* and *phyh-1*) or modestly increased reproductive ability (*pcyt-1*, $P = 0.0039$). (Loss of *acd-1* in *daf-2* animals results in such a high matricide frequency that reproductive span could not be assessed (Fig. 1g)); however, adult-only knockdown of *bcat-1* significantly reduced *daf-2*'s reproductive ability with age (Fig. 1f) and increased BCAA levels (Fig. 1h). Therefore, BCAA metabolism seems to be important for the reproductive success of late-mated *daf-2* animals.

bcat-1 is necessary for *daf-2*'s improved reproductive ageing

To determine the role of BCAA metabolism genes in *daf-2*'s youthful characteristics, we first tested their effects on *daf-2* lifespan. ACDH-1 acts downstream of BCAT-1, and we previously found that *acd-1* is required for *daf-2*'s extended lifespan³³. *bcat-1* reduction also significantly shortens *daf-2*'s lifespan (Fig. 2a and Supplementary Table 2), suggesting that BCAA metabolism is important for *daf-2*'s longevity.

Because *bcat-1* reduction significantly reduced *daf-2*'s late-mated reproduction (Fig. 1f), we further investigated the effect of *bcat-1* knockdown; loss of *bcat-1* significantly impairs the ability of *daf-2* mothers to produce progeny after mating (Fig. 2b). Previously, we found that *daf-2*'s ability to reproduce late in life is due to improved oocyte quality maintenance with age^{9,18}. While oocyte quality decline is observed in wild-type worms as early as day 5, *daf-2* animals maintain high-quality oocytes late into the reproductive period, which extends reproduction⁹. On day 7 of adulthood, mated *daf-2* animals maintain uniformly sized, cuboidal-shaped oocytes, aligned one next to each other in the proximal end of the gonad⁹ (Fig. 2c; control), but *bcat-1* RNAi treatment causes misshapen and small oocytes and significant germline abnormalities (Fig. 2c,d), suggesting that BCAT-1 is required for *daf-2*'s ability to extend reproductive span by maintaining high-quality oocytes with age.

To determine in which tissue BCAT-1 acts to regulate reproductive span, we treated tissue-specific RNAi strains with *bcat-1* RNAi. Knockdown of *bcat-1* in the hypodermis, intestine or muscle had no significant effect, but reduction of *bcat-1* specifically in the germline significantly reduced the fraction of animals that were reproductive

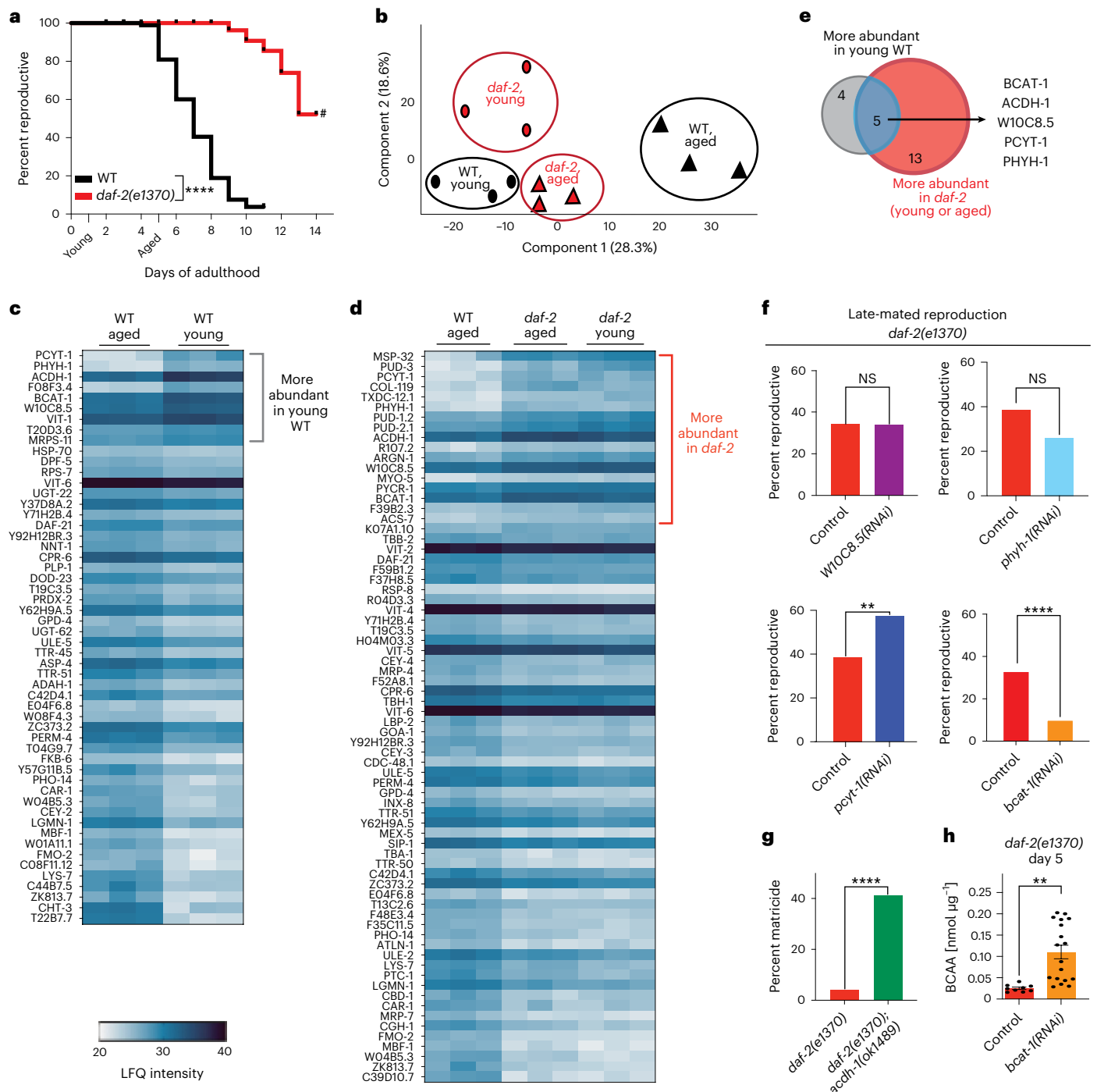


Fig. 1 The mitochondrial proteome of *daf-2* is similar to young wild-type and distinct from aged wild-type. **a**, *daf-2* mutants have an extended mated reproductive span. Time points of young (day 1) and aged (day 5) mitochondria isolation are indicated. # indicates a high matricide frequency. $n = 100$ worms per group. Mantel–Cox log-ranking, **** $P \leq 0.0001$. Three biological replicates were performed. WT, wild type. **b**, PCA of mitochondrial proteins suggests a similarity between young wild-type and young and aged *daf-2* and distinct clustering from the aged wild-type mitochondria proteome. **c, d**, Label-free quantification (LFQ) intensity heat maps of proteins that are significantly different (q value < 0.05 , $-1 < \log_2(\text{ratio}) < 1$) in young wild-type (**c**) or young and aged *daf-2* (**d**) compared with aged wild-type mitochondria. **e**, Venn diagram of proteins that were more abundant in mitochondria isolated from young wild-type and *daf-2* worms compared with aged wild-type worms (five proteins, hypergeometric $P < 0.005$).

The intersection shows the list of shared proteins. **f**, Late-mated reproduction of adult day 8 *daf-2*. P values (Cochran–Mantel–Haenszel test for multiple chi-squared tests, two-sided) are *W10C8.5* = 0.189, *phyh-1* = 0.12, *pcyt-1* = 0.0039 and *bcat-1* = 2.80×10^{-8} . NS, not significant. Control or gene-specific RNAi for *W10C8.5* ($n = 81, 76$), *phyh-1* ($n = 96, 92$), *pcyt-1* ($n = 96, 96$) or *bcat-1* ($n = 104, 103$). **g**, *acdh-1* knockout in *daf-2* animals results in high matricide frequency at day 7 of adulthood. $n = 74$ for *daf-2(e1370)*, $n = 68$ for *daf-2(e1370); acdh-1(ok1489)*. Chi-squared test, two-sided, **** $P \leq 0.0001$. Representative graph from at least three biological repeats (**a, f, g**). **h**, BCAA levels are increased in day 5 *daf-2* worms after adult-only *bcat-1* knockdown. Each dot represents a different measurement of BCAA concentration from a lysate of at least 70 worms. Control $n = 9$, *bcat-1(RNAi)* $n = 18$. Two-tailed, unpaired t -test. ** $P = 0.001$. Mean \pm s.e.m. All measurements from a total of three biological replicates are shown.

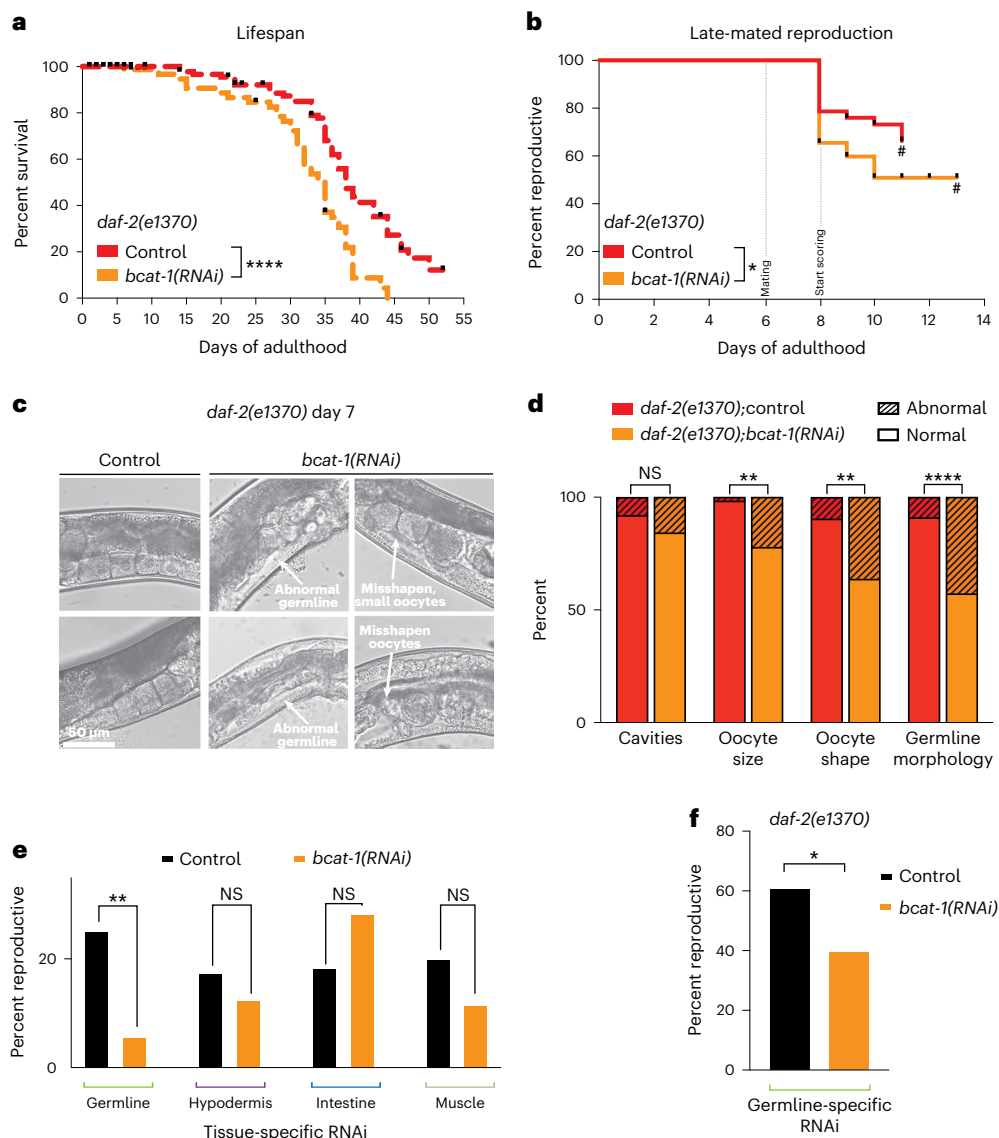


Fig. 2 | Downregulating *bcat-1* in *daf-2* reduces lifespan, reproductive capability and oocyte quality. **a**, Adult-only knockdown of *bcat-1* shortens the lifespan of *daf-2*. Representative graph. Lifespan data are plotted as Kaplan–Meier survival curves and the *P* value was calculated using Mantel–Cox log-ranking ($****P \leq 0.0001$). $n = 120$ for each condition. **b**, Adult-only knockdown of *bcat-1* decreases the late-mated reproduction of adult *daf-2* at day 8 as scored every day after mating ($n = 75$ for control, $n = 58$ for *bcat-1(RNAi)*), Mantel–Cox log-ranking $*P = 0.025$. # represents a high matricide rate. **c,d**, *bcat-1* is required for oocyte and germline quality maintenance in *daf-2* animals (**c**, representative images), as scored based on oocyte quality criteria (**d**). $n = 67$ for control, $n = 57$ for *bcat-1(RNAi)*. Chi-squared test, two-sided. NS, not significant, $**P = (size, 0.002; shape, 0.004)$, $****P \leq 0.0001$. **e**, Adult-only knockdown of *bcat-1* specifically in

the germline, but not in the hypodermis, intestine or muscle, decreases the late-mated reproductive capability of day 5 wild-type worms. *bcat-1(RNAi)* was initiated at the L4 stage to avoid developmental lethality and to limit knockdown to adults and the germline/oocytes. Germline, $n = 83$ for control, $n = 70$ for *bcat-1(RNAi)*; hypodermis, $n = 74$ for control, $n = 80$ for *bcat-1(RNAi)*; intestine, $n = 71$ for control, $n = 74$ for *bcat-1(RNAi)*; muscle, $n = 45$ for control, $n = 43$ for *bcat-1(RNAi)*. Chi-squared test, two-sided. NS, not significant, $**P = 0.0011$. **f**, Germline-specific *bcat-1* knockdown (adult-only) in *daf-2* animals decreases reproductive ability with age. Late mating was tested at day 8. $n = 82$ for control, $n = 87$ for *bcat-1(RNAi)*. Fisher’s exact test, two-sided, $*P = 0.014$. A representative data are shown from (**a–e**) three or (**f**) two biological replicates.

(Fig. 2e). We next tested effect of *bcat-1* reduction specifically in the germline of *daf-2* animals. Similar to wild-type animals, *bcat-1* knockdown specifically in the germline reduced *daf-2*’s reproductive ability with age (Fig. 2f). These results suggest that *bcat-1* acts cell autonomously to regulate reproductive ageing.

bcat-1-dependent *daf-2* gene expression in aged oocytes

Because *bcat-1* acts in the germline to regulate reproductive span of *daf-2* worms, differences between *daf-2* and *daf-2;bcat-1(RNAi)* oocytes might reveal oocyte quality-control mechanisms. We carried out RNA sequencing on isolated *daf-2* and *daf-2;bcat-1(RNAi)* day 8

oocytes. Principal-component analysis (PCA) (Fig. 3a) and hierarchical clustering (Fig. 3b) analysis suggest that old *daf-2;bcat-1(RNAi)* oocytes are transcriptionally distinct from old *daf-2* oocytes (adjusted *P* value (*Padj*) < 0.05 ; Extended Data Fig. 2 and Supplementary Table 3). *bcat-1* RNAi treatment of *daf-2* worms downregulated many oocyte quality genes and pathways related to germline and oocyte quality. For example, 9 of the 21 *C. elegans* *skr* (SKP1-related ubiquitin ligase complex component) genes declined in *daf-2;bcat-1(RNAi)* oocytes (KEGG enrichment (ubiquitin-mediated proteolysis, *Padj* = 0.003; Fig. 3c). *skr/SKP1* genes encode proteins that are in SCF complexes required in mammals for oocyte maturation and embryo development, and their inhibition leads

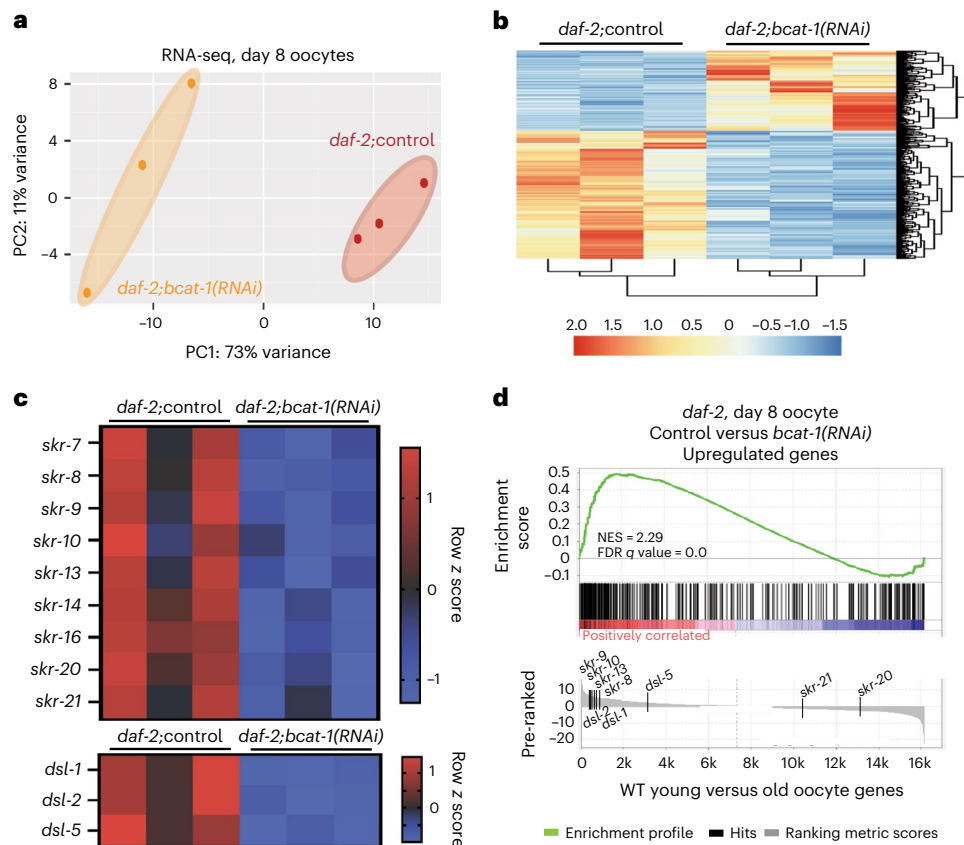


Fig. 3 *bcat-1* knockdown alters the expression of oocyte genes important for maintaining youthful characteristics in *daf-2* animals. **a**, **b**, PCA (**a**) and hierarchical clustering (**b**) of RNA-seq samples from day 8 oocytes collected from *daf-2;control* and *daf-2;bcat-1(RNAi)* animals. For hierarchical clustering, row z scores were determined from normalized counts of differentially expressed genes (DESeq2, $P_{adj} < 0.05$). **c**, Heat map plots: Row z scores were determined from normalized counts of differentially expressed *skr* genes (SKP1-related)

and *dsl* genes (Delta/Serrate/Lag-2 domain) from DESeq2. **d**, GSEA shows that genes upregulated in *daf-2;control* versus *daf-2;bcat-1(RNAi)* oocytes are enriched in the WT young oocytes (day 1 versus day 5) gene set. A heat map of gene clustering from *bcat-1*-dependent *daf-2* genes is displayed on the x axis and gene enrichment scores compared with young versus old oocyte genes are shown on the y axis. FDR, false discovery rate; NES, normalized enrichment score. See also Supplementary Table 3.

to fertility defects in mouse³⁴ and bovine embryos³⁵. Delta/lag-2-like Notch ligands were also downregulated in *daf-2;bcat-1(RNAi)* oocytes; GLP-1/Notch signalling regulates functional oocyte development in *C. elegans*³⁶, and disruption of Notch signalling in mammals leads to various ovarian pathologies³⁷.

We then compared the *bcat-1*-dependent *daf-2* oocyte genes to those that change with age in wild-type oocytes. Gene set enrichment analysis (GSEA) showed that genes upregulated in young oocytes (day 1 compared with day 5) are significantly enriched for genes that are more highly expressed in *daf-2* oocytes compared with oocytes from *daf-2;bcat-1(RNAi)* worms (Fig. 3d). These results suggest that *bcat-1* is required by *daf-2* animals, at least in part, to maintain the youthful gene expression characteristics of its oocytes.

bcat-1 loss alters mitochondria localization and activity

We next examined how *bcat-1* reduction affects germline mitochondrial function and morphology. To visualize germline mitochondria, we used a *daf-2* strain expressing the outer mitochondrial membrane protein TOMM-20 fused to mKate2 specifically in the germline. Under control RNAi conditions, mitochondria are uniformly distributed in mature oocytes (Fig. 4a; control); however, adult-only knockdown of *bcat-1* in *daf-2* induces perinuclear clustering of oocyte mitochondria (Fig. 4a,b (inset) and Supplementary Videos 1–3). Perinuclear mitochondrial distribution is associated with cellular stress and changes in cellular reactive oxygen species (ROS) levels³⁸, and we previously found that *bcat-1* knockdown increases mitochondrial hyperactivity,

increasing the mitochondrial oxygen consumption rate³⁹. Therefore, we tested whether BCAA metabolism affects mitochondrial ROS (mtROS) in aged *daf-2* oocytes using the MitoTracker Red CM-H2XRos reporter (Extended Data Fig. 3a). Unlike wild-type oocytes, which show increased mtROS levels with age, *daf-2* maintains low mtROS in mature oocytes with age (Fig. 4c); however, mtROS levels are higher in day 5 *daf-2;bcat-1(RNAi)* oocytes compared with the control (Fig. 4d), suggesting that *bcat-1* is essential for maintaining low levels of cellular mitochondrial ROS. Maintaining mitochondria membrane potential (MMP), which in turn maintains appropriate ROS levels, is crucial for preserving mitochondrial health and ensuring overall cellular function. To specifically assess MMP, we used tetramethylrhodamine ethyl ester (TMRE), a dye that labels active mitochondria through increased mitochondrial membrane potential (Extended Data Fig. 4). *bcat-1* knockdown increased TMRE fluorescence intensity in *daf-2* oocytes, indicating mitochondrial hyperactivity (Fig. 4e), consistent with our previous results³⁹. Unlike the effects of *bcat-1* knockdown, we found no significant differences in mtROS levels (Extended Data Fig. 4a) and MMP (Extended Data Fig. 4b) in mature oocytes upon *acdH-1* knockdown in aged *daf-2* animals. Similarly, we found no significant differences in mtROS levels comparing aged *acdH-1* versus wild-type oocytes (Extended Data Fig. 4c). In contrast to BCAT-1, which is essential for the metabolism of all three BCAAs, ACDH-1 is specialized for the processing of isoleucine and valine. These results suggest that the specific metabolites upstream of, or in parallel to, *acdH-1* regulate mitochondrial function in aged *daf-2* oocytes.

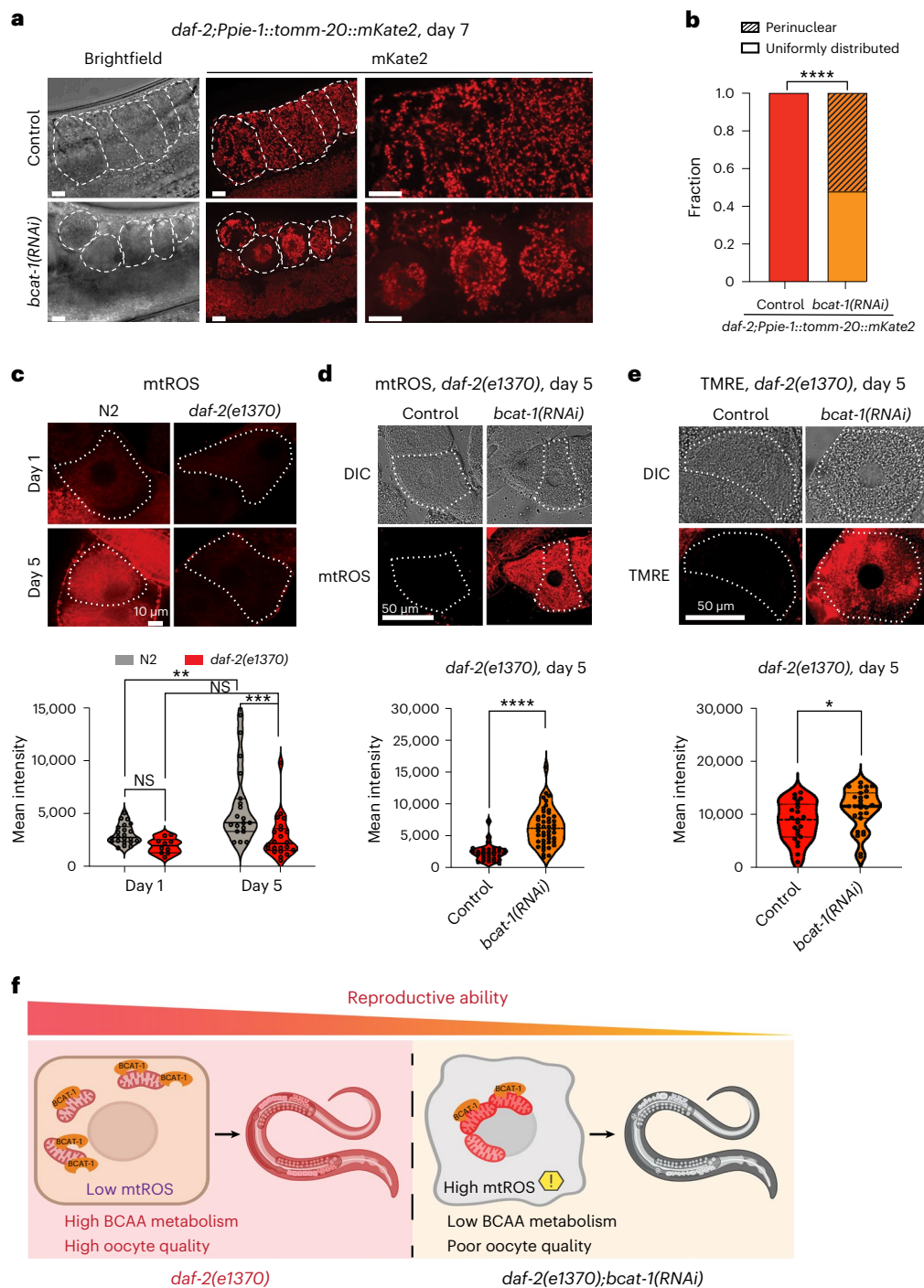


Fig. 4 | *bcat-1* knockdown in *daf-2* mutants alters mitochondria cellular localization, mtROS levels and mitochondria activity. **a**, Adult-only *bcat-1* knockdown results in the perinuclear localization of mitochondria in *daf-2* oocytes on day 7. A white dashed outline marks mature oocytes. Scale bars, 10 μ m. **b**, Quantification of perinuclear mitochondria localization in *daf-2* oocytes from **a**. Representative graph from three biological replicates. $n = 36$ for control, $n = 44$ for *bcat-1(RNAi)*. Chi-squared test, two-sided. **** $P \leq 0.0001$. **c**, mtROS levels are increased on day 5 in the mature oocyte of WT animals, but not *daf-2* (compared to day 1). Quantification of mtROS (mean intensity) in -1 oocyte in WT animals compared with *daf-2*, day 1 versus day 5 of adulthood (bottom). Day 1 (N2, $n = 22$; *daf-2*, $n = 10$) and day 5 (N2, $n = 19$; *daf-2*, $n = 22$). Two-way analysis of variance with Tukey's multiple comparison. NS, not significant; ** $P = 0.0018$; *** $P = 0.0005$. N2, wild-type worms. **d**, mtROS levels are increased in *daf-2* mature oocytes on day 5 upon adult-only *bcat-1* knockdown. mtROS

levels in *daf-2* mature oocytes on day 5 upon adult-only *bcat-1* knockdown (bottom). $n = 30$ for control, $n = 46$ for *bcat-1(RNAi)*. Two-tailed, unpaired t -test. **** $P \leq 0.0001$. DIC, differential interference contrast. **e**, Mitochondrial membrane potential is higher in *daf-2* mature oocytes on day 5 upon adult-only *bcat-1* knockdown. Quantification of TMRE signal in *daf-2* mature oocytes on day 5 upon adult-only *bcat-1* knockdown (bottom). Control $n = 23$, *bcat-1(RNAi)* $n = 27$. Two-tailed, unpaired t -test. * $P = 0.034$. A white dashed outline marks the most mature oocyte (-1 oocyte) (**c-e**). Representative images and graphs from three biological replicates are shown (**a-e**). **f**, Model showing that *bcat-1* is important for mitochondria cellular localization, mtROS levels and mitochondria activity in *daf-2* mature oocytes. Upon *bcat-1* downregulation, mitochondria are altered and oocyte quality is poor, resulting in a shorter reproductive span. Image created with BioRender.com.

Together, these results indicate that altered BCAA metabolism caused by *bcat-1* reduction disrupts mitochondrial cellular distribution and promotes hyperactive mitochondria in *daf-2* oocytes. *bcat-1* reduction is also associated with elevated mtROS levels in aged oocytes, like those observed in wild-type oocytes with age. These changes upon reduction of BCAT-1 may contribute to the accelerated decline of *daf-2* oocyte quality and reduction of reproductive span (Fig. 4f).

***bcat-1* overexpression improves reproduction oocyte quality**

We next asked how changes in *bcat-1* levels affect wild-type animals. As in *daf-2* mutants (Fig. 1h), reduction of *bcat-1* increases BCAA levels in wild-type worms (Fig. 5a). Both late-mated reproduction (Extended Data Fig. 5a) and reproductive span (Fig. 5b and Supplementary Table 2) of wild-type worms are reduced upon *bcat-1* knockdown, demonstrating that *bcat-1* is required for normal reproduction. To test whether increasing BCAA levels individually would mimic *bcat-1* knockdown's effect on reproduction, we supplemented wild-type adult worms with each BCAA individually (5 mM final concentration) and monitored reproductive span. Of the three BCAAs, supplementing leucine alone was sufficient to shorten the reproductive span, but the magnitude is smaller than *bcat-1* knockdown (Fig. 5c).

We next asked whether increasing BCAT-1 levels could slow reproductive decline, using a published and verified *bcat-1* overexpression strain⁴⁰ (Extended Data Fig. 5b). Indeed, overexpression of *bcat-1* significantly extends reproductive span (Fig. 5d and Supplementary Table 2). To determine whether *bcat-1* overexpression slows oocyte quality loss with age, we examined oocytes on day 5 of adulthood following mating; *bcat-1* overexpression significantly improved oocyte quality relative to wild-type controls (Fig. 5e). Like human oocytes, *C. elegans* oocytes similarly display age-related oocyte developmental defects, such as chromosomal segregation errors that result in reduced oocyte fertilizability and embryo hatching^{9,41}. We previously showed that the oocytes of aged mated wild-type hermaphrodites have reduced chromosome segregation fidelity and that these animals produce significantly more unfertilized oocytes compared with young worms⁹. To determine whether *bcat-1* overexpression improves oocyte fertilizability with age, we mated wild-type hermaphrodites and counted the proportion of unfertilized oocytes as the animals aged. Consistent with our previous results⁹, wild-type animals produced a significantly greater proportion of unfertilized oocytes with age; however, worms overexpressing *bcat-1* produced significantly fewer unfertilized oocytes relative to fertilized embryos (Fig. 5f). *bcat-1* overexpression also may increase progeny production with age (Fig. 5g).

Wild-type oocytes exhibit increased levels of mtROS with age (Fig. 4c,d), while ROS levels are decreased in aged *daf-2* oocytes relative to aged N2 oocytes, and day 5 *daf-2;bcat-1(RNAi)* oocytes show higher mtROS levels compared with the *daf-2;control(RNAi)* group (Fig. 4e,f), implying a crucial role for *bcat-1* in maintaining low levels of cellular mtROS. Consistent with these results, BCAT-1 overexpression leads to reduced mtROS levels in aged wild-type oocytes (Fig. 5h).

As *bcat-1* overexpression is beneficial for reproductive ageing, we next examined the role of *bcat-1* in lifespan (Fig. 5i,j and Supplementary Table 2). We found that neither overexpression nor knockdown of *bcat-1* affected lifespan (Fig. 5i,j, Extended Data Fig. 5c and Supplementary Table 2), counter to a previous report⁴⁰. While we observed effects on other age-related phenotypes upon *bcat-1* knockdown, including decreased reproductive span, increased BCAA levels (Fig. 5a), and changes in mtROS, we never observed an extension of lifespan (Extended Data Fig. 5c) even using the same reagents⁴⁰. Thus, *bcat-1* levels seem to regulate oocyte quality and reproductive ageing but have no apparent role in the regulation of lifespan in wild-type animals. These findings parallel our previous study demonstrating the potential decoupling of extended reproductive span and lifespan¹³. Overall, these results suggest that increased levels of BCAT-1 are sufficient to improve reproductive ageing and oocyte quality in *C. elegans*.

BCAT-1 overexpression and *daf-2* share oocyte transcripts

To identify oocyte transcriptional changes that might regulate oocyte quality maintenance, we performed RNA sequencing on unfertilized oocytes isolated from *fem-1* (self-spermless) control and *fem-1;bcat-1*-overexpressing worms on day 8 of adulthood and compared the suite of significantly changed *bcat-1* overexpression-regulated oocyte genes ($P_{adj} < 0.05$; Extended Data Fig. 6 and Supplementary Table 4) to previously identified *daf-2(RNAi)* oocyte transcriptional targets¹⁸. Genes upregulated in aged *daf-2(RNAi)* oocytes are highly enriched among the upregulated genes in *bcat-1*-overexpressing worms' oocytes (Fig. 6c). Similarly, downregulated *daf-2(RNAi)* oocyte targets are enriched for genes that decline in oocytes from *bcat-1*-overexpressing worms (Fig. 6d). These findings suggest that *bcat-1* overexpression regulates oocyte gene expression through a shared subset of genes also targeted by the *daf-2*/IIS pathway. Several of the oocyte transcriptional targets upregulated by *bcat-1* overexpression and *daf-2(RNAi)* were previously shown to have functional roles in the germline and reproduction. For example, *scl-19* encodes an SCP-like secreted protein that affects germline tumour formation⁴². Oocytes from both *daf-2(RNAi)* and *bcat-1*-overexpressing worms had significantly upregulated *fol-1* (folate transporter) levels and *fol-1* mutants exhibit many germline and oocyte defects⁴³. These findings are consistent with studies showing that the folate receptor is expressed in oocytes and that maternally contributed folate receptor transcripts promote embryonic development⁴⁴.

Reduction of *daf-2* results in the downregulation of cathepsin-B-like cysteine proteases in aged oocytes¹⁸, and reduction of cathepsin-B activity by RNAi knockdown or by pharmacological cathepsin-B enzyme inhibition improved oocyte quality with age in wild-type animals¹⁸. Similarly, significant downregulation of several *cpr* (cysteine protease-related) genes was observed in oocytes from *bcat-1*-overexpressing worms (Fig. 6e). Additional shared downregulated transcriptional targets include vitellogenins that encode major yolk proteins, and the metallothionein *mtl-2*. Overall, the similarity between oocytes from *daf-2(RNAi)* and *bcat-1*-overexpressing worms suggests that *bcat-1* overexpression acts at least partially through shared *daf-2*/IIS targets to improve reproductive span and oocyte quality with age.

Vitamin B1 slows reproductive decline in wild-type worms

BCAT-1 catalyzes the first step of the catabolism of BCAAs (Fig. 7a), and we found that its reduction is sufficient to elevate BCAA levels in aged wild-type and *daf-2* animals (Figs. 1h and 5a). Our findings suggest that maintaining BCAT-1 levels with age may extend reproduction by maintaining flux through the BCAA pathway. We hypothesized that other treatments that affect BCAA metabolism downstream of BCAT-1 might similarly improve reproductive ageing in *C. elegans*. The rate-limiting reaction of the BCAA metabolism pathway is catalysed by the branched-chain α -keto acid dehydrogenase complex⁴⁵ (Fig. 7a). This mitochondrial enzymatic complex converts the α -keto acids of each BCAA to the corresponding acyl CoAs. Branched-chain α -keto acid dehydrogenase is composed of three subunits, E1, E2 and E3. The E1 subunit binds thiamine pyrophosphate, which is an essential cofactor and a derivative of thiamine, also known as vitamin B1 (ref. 46). Animals cannot synthesize thiamine and rely on its absorption from their diet. After being imported into animal cells, thiamine is transformed into thiamine pyrophosphate by thiamine pyrophosphokinase⁴⁶. When thiamine levels are insufficient, BCAA catabolism is impaired, increasing the levels of unprocessed branched-chain keto acids⁴⁷.

To test whether vitamin B1 affects reproductive ageing, we supplemented the bacterial diet with vitamin B1 starting on the first day of adulthood; this treatment significantly extends the mated reproductive span of wild-type worms, increasing the median reproductive span by more than 30% (Fig. 7b and Supplementary Table 2). Moreover, oocytes of aged animals supplemented with vitamin B1 were significantly higher in quality, particularly in oocyte shape (Fig. 7c,d).

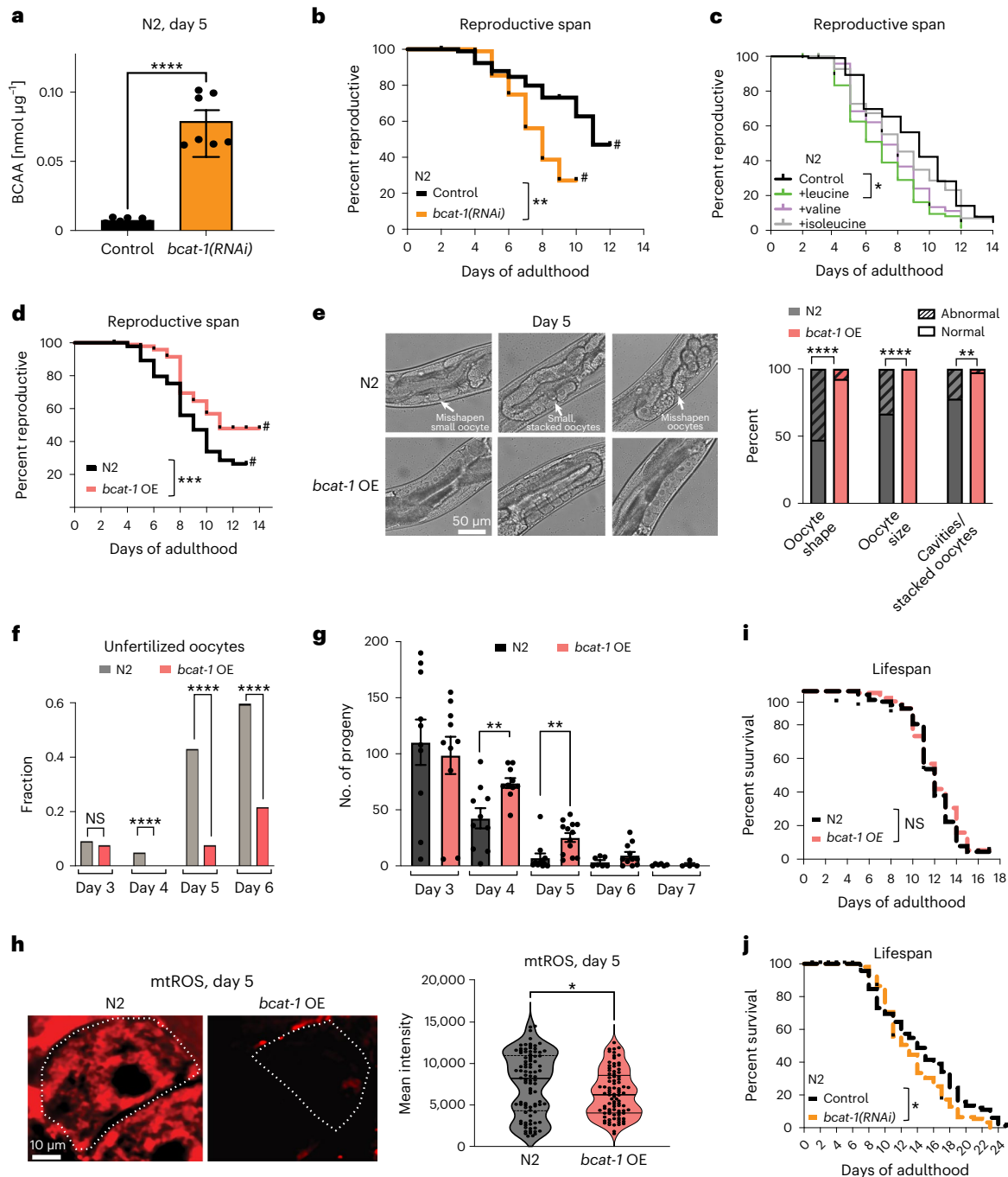


Fig. 5 *bcatal-1* knockdown reduces the reproductive capability of wild-type worms, whereas its overexpression improves wild-type oocyte quality and extends reproductive span. **a**, BCAA levels increase after adult-only *bcatal-1* knockdown. Each dot represents BCAA concentration measurements from lysate containing at least 70 worms. Three biological replicates are shown. Two-tailed, unpaired *t*-test. **** $P \leq 0.0001$. Mean \pm s.e.m. **b**, *bcatal-1* knockdown reduces mated reproductive span of WT worms. $n = 100$ for control, $n = 90$ for *bcatal-1(RNAi)*. ** $P = 0.0016$. # represents a high matricide rate. **c**, 5 mM leucine shortens mated WT reproductive span. $n = 100$ for each condition. * $P = 0.04$. **d**, Overexpressing (OE) *bcatal-1* extends mated reproductive span. WT ($n = 100$), *bcatal-1* OE ($n = 90$), **** $P = 0.0008$. **e**, *bcatal-1* OE improves oocyte quality with age. WT ($n = 36$), *bcatal-1* OE ($n = 40$). **** $P \leq 0.0001$, ** $P = 0.008$. **f**, Compared with WT, mated *bcatal-1* OE produce fewer unfertilized oocytes (relative to fertilized embryos). Chi-squared

tests. NS, not significant, **** $P \leq 0.0001$. **g**, Progeny production in WT compared to *bcatal-1* OE. Unpaired *t*-test. ** P (day 4 = 0.006, day 5 = 0.004). WT or *bcatal-1* OE animals analysed on day 3 ($n = 10$ and 10) day 4 ($n = 10$ and 10), day 5 (11 and 13), day 6 (7 and 4) or day 7 ($n = 6$ and 4). Mean \pm s.e.m. **h**, mtROS levels were lower in the mature oocytes of aged *bcatal-1* OE worms compared to WT (left). A white outline marks the most mature (-1) oocyte. mtROS quantification (mean intensity) in the -1 oocyte of day 5 WT compared with *bcatal-1* OE (right). Data are pooled from three biological replicates. Unpaired *t*-test. N2 ($n = 94$), *bcatal-1* OE ($n = 89$), * $P = 0.018$. **i, j**, *bcatal-1* knockdown (**i**) and OE (**j**) lifespans. $n = 100$ (**i**) and $n = 120$ (**j**) for each condition. Data are plotted as Kaplan–Meier survival curves, Mantel–Cox log-rank (NS, not significant; * $P = 0.033$). Representative data from at least three biological replicates are shown (**a–j**).

We also found that hermaphrodites supplemented with vitamin B1 at day 4 of adulthood produced fewer unfertilized oocytes, similar to worms overexpressing *bcatal-1* (Fig. 7e) and other mutants with extended

reproductive spans (*daf-2* and *sma-2*)⁹, suggesting that vitamin B1 supplementation delays not just oocyte deterioration, but also the decline in oocyte fertilizability with age.

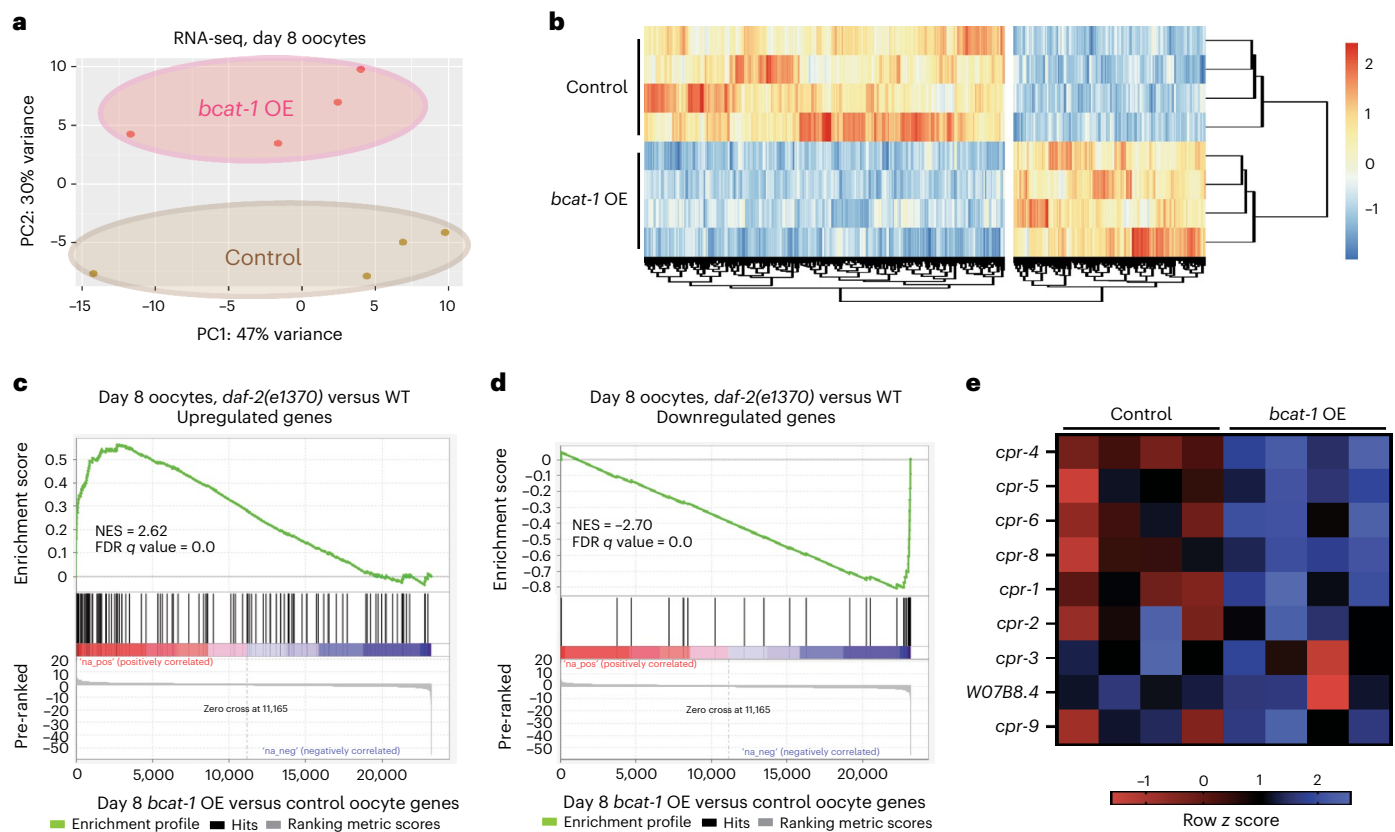


Fig. 6 | Oocytes from *bcat-1*-overexpressing worms are transcriptionally similar to oocytes from *daf-2(RNAi)* worms. **a**, PCA of RNA-seq samples from day 8 oocytes collected from *fem-1* control and *fem-1; bcat-1 OE* animals. **b**, Row z scores were determined from normalized counts of differentially expressed genes (DESeq2; $P_{adj} < 0.05$), and hierarchical clustering was performed. **c, d**, GSEA shows that genes upregulated in day 8 *daf-2* oocytes¹⁸ (**c**) are enriched in the upregulated

genes from the *bcat-1* overexpression versus the control gene set, whereas downregulated day 8 *daf-2* oocytes (**d**) are enriched in the downregulated genes in oocytes from *bcat-1*-overexpressing worms. **e**, *bcat-1* OE worms downregulate cathepsin protease genes in oocytes. Row z scores were determined from normalized counts of *C. elegans cpr* (cysteine protease-related) genes from DESeq2. See also Supplementary Table 4.

We next examined whether vitamin B1 has similar effects on lifespan compared with its effect on reproductive span. Adult-only supplementation of vitamin B1 very slightly extends the lifespan of wild-type animals (Fig. 7g and Supplementary Table 2), but to a lesser extent than its effect on reproductive span (Fig. 7b). These results suggest a specific effect of vitamin B1 on reproduction, rather than somatic health with age, but also suggest that vitamin B1 is not toxic to the animals.

mtROS levels were elevated in both aged wild-type and aged *daf-2(e1370); bcat-1(RNAi)* worms (Fig. 4c–f). Because supplementing vitamin B1 during adulthood is sufficient to improve oocyte quality with age and to extend reproduction, we next tested whether supplementation with vitamin B1 also reduces mtROS in aged oocytes. Indeed, aged oocytes of animals supplemented with vitamin B1 had significantly lower levels of mtROS compared with untreated animals (Fig. 7h). Together, these data suggest that the addition of a dietary supplement that promotes BCAA metabolism starting in adulthood is sufficient to improve oocyte quality, thus extending reproductive ability with age, at least in part, through a reduction in mtROS levels in aged oocytes (Fig. 7i).

Discussion

Here, we have established a regulatory connection between BCAA metabolic enzymes and reproductive longevity. By profiling the mitochondrial proteome of young and old wild-type and *daf-2* insulin/IGF-1 mutant *C. elegans*, we discovered a ‘youthful’ mitochondrial proteomic profile that is distinct from that of aged animals; the level of the first enzyme in BCAA metabolism, BCAT-1, is one of the principal

differences in these profiles. We found that *bcat-1* is crucial for *daf-2*'s maintenance of reproduction with age through its regulation of mitochondrial localization, mitochondrial activity, and low mtROS levels in *daf-2*'s aged oocytes. Our transcriptional data indicate that *bcat-1* is also required for *daf-2* oocytes to maintain youthful gene expression. Additionally, we found that *bcat-1* overexpression extends wild-type reproductive span by improving oocyte quality. Furthermore, supplementation of the BCAA pathway cofactor vitamin B1 improves age-related phenotypes (for example, oocyte fertilizability, mitochondrial localization and function, and mtROS levels) in oocytes to extend the reproduction of wild-type animals.

We found that reduction of *bcat-1* disrupts BCAA metabolism, increasing levels of BCAT-1 substrates (BCAAs) and reducing the reproductive capability of both wild-type and *daf-2* mutants. Our results are consistent with a recent study of the *bcat-1(hh58)* mutant, which also exhibits elevated BCAA levels and significant reproductive and developmental abnormalities⁴⁸. Unlike *bcat-1*, deletion of *acdH-1*, which encodes the enzyme acyl-CoA dehydrogenase short/branched chain and is specialized for the processing of isoleucine and potentially valine^{49,50} (and is the first enzyme in the alternate propionyl-CoA shunt catabolism pathway⁴⁹), had no significant effect on mitochondrial mtROS; furthermore, we found that supplementation of leucine alone is sufficient to shorten reproductive span, although to a lesser extent than *bcat-1* knockdown. These results suggest that metabolites upstream of or in parallel to *acdH-1* regulate mitochondrial function in aged *daf-2* oocytes. Our study aligns with previous research demonstrating the distinct roles of individual BCAAs in influencing specific

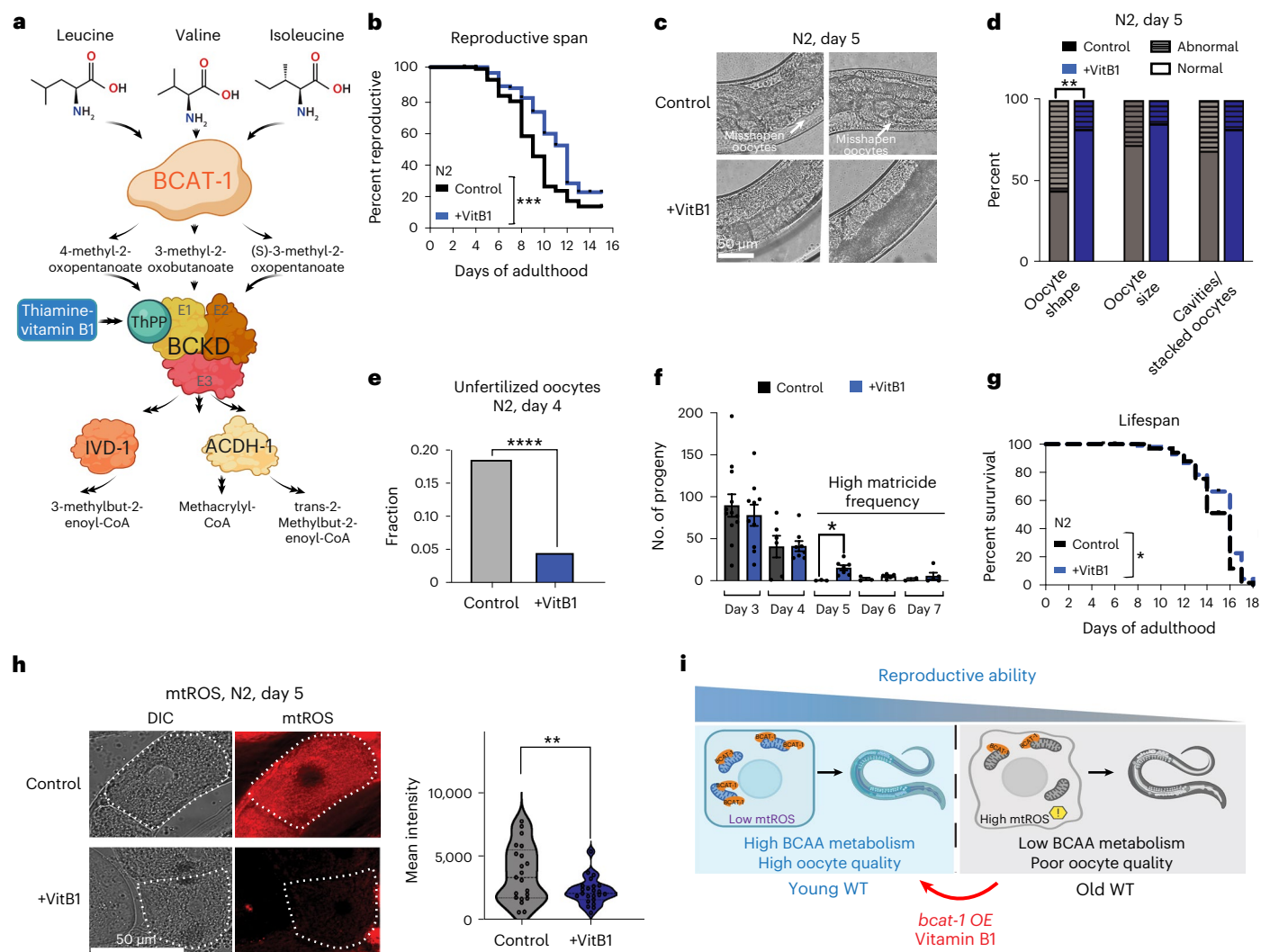


Fig. 7 | Adult-only vitamin B1 supplementation improves wild-type oocyte quality and extends reproductive span. **a**, Schematic of selected steps in the BCAA metabolism pathway in *C. elegans*. **b**, Supplementation with 5 mg ml⁻¹ of thiamine (vitamin B1) starting on day 1 of adulthood significantly extends the mated reproductive span of wild-type animals. *n* = 90 for control, *n* = 88 for vitamin B1 condition. Representative graph of three biological repeats. Mantel–Cox log-ranking ****P* = 0.0003. **c**, Adult-only supplementation of vitamin B1 is sufficient to maintain better oocyte quality with age. **d**, Day 5 oocyte quality quantification in control and vitamin B1-supplemented worms. Control *n* = 29, vitamin B1 *n* = 28. Chi-squared test, two-sided. ***P* = 0.0035, NS, not significant. **e**, Mated animals supplemented with vitamin B1 during their adulthood produce fewer unfertilized oocytes (relative to fertilized embryos) compared with control animals. Chi-squared test, two-sided. *****P* ≤ 0.0001. Control (embryo *n* = 261, unfertilized *n* = 59) or vitamin B1 (embryo *n* = 329, unfertilized *n* = 15). **f**, Progeny production in control or vitamin B1-supplemented animals. Unpaired

t-test, two-sided. **P* = 0.016. WT or vitamin B1-supplemented animals analysed on day 3 (*n* = 10 and 10) day 4 (*n* = 6 and 8), day 5 (3 and 7), day 6 (3 and 5) or day 7 (*n* = 2 and 5). Mean ± s.e.m. **g**, Supplementing vitamin B1 starting on day 1 of adulthood slightly extends lifespan (3%, Mantel–Cox log-rank, *P* = 0.033). **h**, mtROS levels were significantly lower in the day 5 mature oocytes of WT worms supplemented with vitamin B1 compared with controls (left). A white dashed outline marks the most mature oocyte (–1 oocyte). Representative images are shown. Representative graph of three biological repeats (right). Control, *n* = 21; vitamin B1, *n* = 23. Two-tailed, unpaired *t*-test, ***P* = 0.0094. **i**, BCAT-1 is important for WT reproduction. BCAT-1 levels are reduced with age, resulting in reduced reproduction with age due to declining oocyte quality. By overexpressing *bcat-1* or by supplementing with vitamin B1 during adulthood, reproduction can be extended. Images were created with BioRender.com (**a**, **i**). Representative data from three biological replicates are shown (**b**–**h**).

phenotypes. For instance, in mouse and human studies, reducing dietary isoleucine or valine, but not leucine, enhances metabolic health in mice, whereas higher isoleucine intake in humans correlates with increased BMI⁵¹. In *Drosophila*, a decrease in isoleucine, but not valine, leucine or their combinations, was found to be crucial for stimulating feeding behaviour⁵². These suggest that individual BCAAs have specific influences on various phenotypes.

We previously found that downregulation of neuronal *bcat-1* increases endogenous leucine/isoleucine levels, mitochondrial hyperactivity, ROS damage, and subsequent age-dependent motor dysfunction and degeneration of dopamine neurons with age, phenocopying a

Parkinson's disease phenotype³⁹; these results led us to examine *BCAT-1* expression in the substantia nigra of patients with sporadic Parkinson's disease, which we found was also significantly downregulated⁵³. Alzheimer's disease mice also have elevated plasma levels of BCAAs, and *Bcat-1* was downregulated in their brain tissues⁵⁴. Taken together, these findings suggest that reduction of *bcat-1* is linked to increased BCAA levels, a disrupted flux of BCAA metabolism, and subsequent deleterious effects on age-related phenotypes, whereas *bcat-1* overexpression reverses these effects. Consistent with our results, BCAA metabolic enzyme genes are upregulated in both the long-lived mutants *daf-2* and *eat-2* mutants compared with wild-type animals⁵⁵; metabolomic

profiling of these mutants revealed decreased endogenous BCAA levels, suggesting an increased flux through the BCAA pathway. Similarly, a BCAA-restricted diet extends *Drosophila* lifespan⁵⁶, restriction of dietary BCAA levels also extends the lifespan of two progeroid mouse models, and a reduced BCAA diet started at midlife improves metabolic health and decreases frailty of a wild-type mice strain⁵⁷. Together, these results suggest that decreased endogenous BCAA levels and increased flux through the BCAA metabolism pathway work similarly to improve age-related characteristics.

We found that overexpression of *bcat-1* or supplementation with vitamin B1 maintains low oocyte mtROS, promotes oocyte quality, and extends reproductive longevity. Our previous metabolomic analyses showed that the levels of tricarboxylic acid (TCA) cycle substrates and precursors, such as pyruvate and malate, are significantly decreased in *bcat-1(RNAi)* worms, suggesting a potential link between BCAA and TCA cycle metabolism³⁹. Recently, crosstalk between BCAA and pyruvate metabolism was shown; BCKAs inhibit the mitochondrial pyruvate carrier⁵⁸, and mitochondrial pyruvate carrier inhibition stimulates BCAA catabolism⁵⁹. Under normal conditions, BCAT-1 converts BCAAs into their corresponding BCKAs that inhibit pyruvate uptake⁵⁸ and maintain normal ROS levels. Supporting this model, *acdh-1* knockdown, which likely only increases the level of the BCKA for isoleucine, but not those for leucine or potentially valine^{49,50}, neither affects *daf-2*'s mtROS or TMRE levels (Extended Data Fig. 4). Conversely, downregulating *bcat-1* results in accumulation of BCAA substrates (Figs. 1h and 5a), which may decrease BCKAs levels that then stimulate pyruvate uptake⁵⁸. Mitochondrial pyruvate uptake hyperpolarizes the MMP, resulting in the stimulation of ROS production⁶⁰. Therefore, overexpressing *bcat-1* or supplementing with vitamin B1, which we found to promote oocyte and reproductive longevity in wild-type animals, may maintain low mtROS levels through an increase in BCAA metabolism. Notably, vitamin B1 activation of BCKA dehydrogenase would likely decrease BCKA levels⁶¹, which may increase pyruvate metabolism and mtROS production. Consequently, vitamin B1 may only provide reproductive benefits by decreasing BCAAs without increasing BCKA levels.

The conserved mechanisms of reproductive ageing and BCAA metabolism in *C. elegans* and humans provide unique opportunities to identify safe and effective treatments to slow reproductive decline with age. Here we found that both BCAT-1 overexpression and vitamin B1 supplementation promote oocyte and reproductive health in wild-type animals. Vitamin B1 was previously shown to increase the activity of human liver BCKD⁶², which catalyzes the flux-limiting step of BCAA metabolism. Beyond its well-established role as a cofactor for BCKD, vitamin B1 also serves as a cofactor for several enzymes involved in various metabolic processes. While we cannot rule out the influence of vitamin B1 as a cofactor for other enzymes that could regulate reproductive span, it is unlikely that this is due to vitamin B1-induced pyruvate dehydrogenase or α -ketoglutarate dehydrogenase activation. If increased pyruvate dehydrogenase or α -ketoglutarate dehydrogenase activity were responsible for the reproductive benefits of vitamin B1, we would have expected increases in lifespan similar to those previously reported for pyruvate (14%)⁶³ or α -ketoglutarate (50%)⁶⁴ supplementation; however, the strikingly similar reproductive phenotypes observed between vitamin B1 supplementation and *bcat-1* overexpression, including increased reproductive span, oocyte quality, oocyte fertilizability and lower mtROS, suggest that vitamin B1 acts in the same pathway as BCAT-1. Vitamin B1 supplementation experiments were performed on heat-killed bacteria to prevent the interfering effects of bacterial metabolism⁶⁵, limiting our ability to directly test the role of BCKA dehydrogenase in vitamin B1-induced reproductive benefits using RNAi knockdown; nor can we test *bckd* subunits, as these mutants are not fertile^{66,67}. We thus hypothesize that increased BCAA metabolism, either through overexpression of *bcat-1* or supplementation with vitamin B1 to activate BCKD, slows age-related oocyte decline and extends reproductive span. These beneficial effects are unlikely to

be due to reversal of vitamin B1 malnutrition, as we observed no large changes in lifespan with these treatments.

While a possible link between vitamin B1 and oocyte maturation and quality has been shown in mice⁶⁸, those results were found in the context of vitamin B1 deficiency in young reproductive females, not in aged wild-type animals, as we studied here. Therefore, the pathology associated with vitamin B1 deficiency is likely distinct from the beneficial effects that vitamin B1 supplementation has on improved oocyte quality and reproduction. This is not the only instance where differences in mechanisms and phenotypic outcomes between dietary deficiency and supplementation are apparent, and such distinctions are consistently observed across various species, especially as individuals age. Supplementation of biomolecules, even in the absence of obvious deficiency, can be beneficial. Coenzyme Q10, for example, extends lifespan and reduces oxidative stress in wild-type *C. elegans* under normal growth conditions⁶⁹. No adverse effects have been reported for vitamin B1/thiamine supplementation⁷⁰, suggesting that this may be a safe intervention to increase available thiamine levels and, as our study suggests, may increase oocyte quality in females with age.

BCAA metabolism is a highly conserved and essential process from bacteria to mammals⁷¹. Our study establishes links between mitochondrial BCAA metabolism, mtROS levels, oocyte quality, and reproductive ageing. Our data show that age-related decline in mitochondrial BCAT-1 levels correlates with increased oocyte mtROS, and elevated mtROS levels resulting from *bcat-1* knockdown seem to promote oocyte ageing. This role of mtROS in regulating oocyte quality in *C. elegans* is supported by the oocyte and reproductive health effects associated with small molecules that induce antioxidant pathways^{23,26}. Additionally, mitochondria in both human and *Xenopus* early oocytes have low MMP and ROS levels as a result of the absence of complex I in these oocytes; this lack of ROS production promotes the longevity of oocytes²². Similarly, *Drosophila* oocyte mitochondria shift toward a low-activity state at the end of oogenesis, which is required for developmental competence after fertilization⁷². Similar to the effect we observed on mitochondrial morphology in aged *daf-2;bcat-1(RNAi)* oocytes, abnormal mitochondrial aggregation in mouse MII oocytes from three age groups increased with age⁷³, further supporting the link between mitochondria function and oocyte quality. Knockout of the BCKD activator *Ppm1k* in female mice leads to increased plasma levels of BCAA and reproductive dysfunction⁷⁴. Additionally, BCAT-1 was among the transcripts found to be higher in young human oocytes compared with old ('advanced maternal age') MII oocytes⁷⁵. Thus, it seems that the mitochondrial regulators of metabolism we have identified here that affect reproductive ageing and oocyte quality in *C. elegans* are likely to play conserved roles in the reproductive health of higher organisms, as well.

The genetic pathways that regulate oocyte quality with age are conserved from *C. elegans* to humans⁹, highlighting their fundamental importance in reproductive longevity. Our findings may pave the way for mitochondrial metabolism-based therapeutic interventions, such as vitamin B1 dietary supplementation, to mitigate the effects of reproductive ageing and to promote reproductive health in women.

Methods

C. elegans genetics and maintenance

Worm strains were provided by the *C. elegans* Genetics Center (CGC). A list of strains used in this study is supplied in Supplementary Table 5. *C. elegans* strains were cultured using standard methods. Worms were maintained at 20 °C on plates made from either nematode growth-medium (NGM), 3 g l⁻¹ NaCl, 2.5 g l⁻¹ Bacto-peptone and 17 g l⁻¹ Bacto-agar in distilled water, with 1 ml l⁻¹ cholesterol (5 mg ml⁻¹ stock in ethanol), 1 ml l⁻¹ 1 M CaCl₂, 1 ml l⁻¹ 1 M MgSO₄ and 25 ml l⁻¹ 1 M potassium phosphate buffer (pH 6.0) added to molten agar after autoclaving; or high-growth medium (HGM), 20 g l⁻¹ Bacto-peptone, 30 g l⁻¹ Bacto-agar and 4 ml l⁻¹ cholesterol, with all other components the same

as NGM. Plates were seeded with OP50 *E. coli* for ad libitum feeding. For synchronizing worms, gravid hermaphrodites were exposed to a 15% hypochlorite solution (8.0 ml water, 0.5 ml 5 N KOH and 1.5 ml sodium hypochlorite) to collect eggs, which were washed in M9 buffer (6 g l⁻¹ Na₂HPO₄, 3 g l⁻¹ KH₂PO₄, 5 g l⁻¹ NaCl and 1 ml l⁻¹ 1 M MgSO₄ in distilled water) before transferring to seeded plates.

For RNAi experiments, standard NGM molten agar was supplemented with 1 ml l⁻¹ 1 M isopropyl β-D-1-thiogalactopyranoside (IPTG) and 1 ml l⁻¹ 100 mg ml⁻¹ carbenicillin (RNAi plates). Plates were seeded with HT115 *Escherichia coli* containing the RNAi plasmid or empty control vector (L4440). RNAi clones were obtained from the Ahringer RNAi library and induced with 0.1 M IPTG 1 h before transfer, starting at adulthood. Worms were transferred to freshly seeded plates every other day when producing progeny, unless otherwise specified. For all RNAi experiments, worms were transferred to RNAi plates that were pre-sequence verified.

Mitochondria purification for mass spectrometry and proteomic analysis

Synchronized *C. elegans* were maintained on HGM agar plates seeded with *E. coli* OP50 as the food source. Every 2 d, worms were washed off plates with M9 buffer and transferred to fresh plates to avoid progeny accumulation. Mitochondria were isolated using the following optimized protocol modified from previously described methods⁷⁶.

Worms at the appropriate adult stage (as indicated per experiment) were washed off plates with M9 buffer and transferred to HGM agar plates spotted with 5 mg ml⁻¹ serotonin to induce egg laying. After incubation for 2 h at 20 °C, worms were collected from plates and washed 5× with M9 buffer. Worms were then washed with ice-cold 0.1 M NaCl, pelleted at 1,100g for 5 min at room temperature and resuspended with an ice-cold mix of 0.1 M NaCl and 60% sucrose (1:1 v/v ratio). Animals were centrifuged at 1,100g for 5 min and floating worms were collected and diluted 1:4 in 0.1 M NaCl. Worms were then washed twice with 0.1 M NaCl and resuspended in mitochondria isolation buffer (MIB; 50 mM KCl, 110 mM mannitol, 70 mM sucrose, 0.1 mM EDTA, pH 8.0 and 5 mM Tris-HCl, pH 7.4). The resuspended worms were transferred to a cold glass 2-ml Dounce homogenizer (KIMBLE KONTES, 885300-0002) and were homogenized using 20 strokes (B pestle). To remove nuclei and cell debris, the homogenate was centrifuged at 750g for 5 min at 4 °C. The supernatant was collected and set aside at 4 °C, while the pellet was resuspended in MIB for an additional round of Dounce homogenization to maximize yields. Following centrifugation at 750g for 5 min at 4 °C, the supernatant was pooled with the supernatant collected in the first Dounce step. To remove any residual cell debris and bacteria, the homogenate was filtered through a 5-μm pore size hydrophilic PVDF membrane syringe filter. An aliquot of the homogenate representing cytosolic and membrane cellular fractions was kept for western blot analysis and labelled as the 'C + M' sample. The homogenate was centrifuged at 9,000g for 10 min 4 °C. An aliquot of the supernatant representing the cytosolic fraction was kept for western blot analysis, labelled as the 'C' sample and the remaining supernatant was discarded. The resulting pellet (crude mitochondria) was washed with MIB and centrifuged at 10,000g for 10 min 4 °C. The pellet was resuspended with ice-cold mitochondria resuspension buffer (MRB; 225 mM mannitol, 5 mM HEPES, pH 7.4 and 0.5 mM EGTA) and an aliquot of the crude mitochondria was kept for western blot analysis, labelled as the 'M' sample. The crude mitochondria fraction was further purified over a Percoll gradient^{77,78}; the crude mitochondria suspension was layered on top of a Percoll medium (225 mM mannitol, 25 mM HEPES, pH 7.4, 1 mM EGTA and 30% Percoll (v/v)). Samples were centrifuged at 95,000g for 30 min using an Optima XE-100 Beckman centrifuge (SW55Ti rotor). Then, 1-ml fractions were collected and a sample of each was kept for western blot analysis. The pure mitochondria (Mp) were further diluted in MRB and centrifuged at 6,300g for 10 min to remove residual Percoll. The pure mitochondria pellet was

washed and resuspended with MRB. All samples were frozen in liquid nitrogen and kept at -80 °C until use.

Western blot analysis

For western blot analysis, samples were mixed with 10× Bolt Sample Reducing Agent and 4× Bolt LDS Sample Buffer. Samples were heated at 70 °C for 10 min before loading on a gradient-PAGE (4–12%) Bis-Tris gel. After their separation, samples were transferred to a PVDF membrane and blocked with 5% milk in TBST (10× TBST: 200 mM Tris-HCl, pH 7.5, 1.5 M NaCl and 1% Tween20). Membranes were incubated with one of the following primary antibodies: anti-Histone H3 (1:5,000 dilution), anti-ATP5A (1 μg ml⁻¹) or monoclonal anti-α-Tubulin (0.5 μg ml⁻¹). After washing with TBST, membranes were incubated with the corresponding secondary antibody (either goat anti-mouse IgG H&L (HRP), 1:10,000 dilution or goat anti-rabbit IgG H&L (HRP), 1:10,000 dilution). Membranes were then washed with TBST and imaged using CL-Xposure film.

Mass spectrometry and proteomic analysis

Samples were dissolved in 5% SDS (Sigma, 05030) and 50 mM TEAB buffer (Sigma, T7408). Trypsin digestion was performed using S-Trap micro spin columns according to the manufacturer's protocol (*S-Trap* PROTIFI).

Trypsin-digested samples were dried completely in a SpeedVac and resuspended with 20 μl 0.1% formic acid, pH 3.0. Two microliters (about 360 ng) were injected per run using an Easy-nLC 1200 UPLC system. Samples were loaded directly onto a 50-cm long 75-μm inner diameter nano capillary column packed with 1.9 μm C18-AQ resin (Dr. Maisch) mated to metal emitter in-line with an Orbitrap Fusion Lumos (Thermo Scientific). Easy-Spray NSI source was used. Column temperature was set at 45 °C and the 2-h gradient method with 300 nl min⁻¹ flow was used (with Buffer A, 0.1% formic acid in water; and Buffer B, 0.1% formic acid in 80% acetonitrile and 20% water). The mass spectrometer was operated in data-dependent mode with a resolution of 120,000 for MS1 scan (positive mode, profile data type, AGC gain of 4 × 10⁻⁵, maximum injection time of 54 s and mass range of 375–1,500 m/z) in Orbitrap followed by higher-energy collisional dissociation fragmentation in Ion-trap with 35% collision energy. Charge states of 2 to 7 were included for MS/MS fragmentation. Dynamic exclusion list was invoked to exclude previously sequenced peptides for 60 s and maximum cycle time of 3 s was used. Peptides were isolated for fragmentation using a quadrupole (1.2 m/z isolation window). Ion-trap was operated in Rapid mode. Raw data were analysed using the MaxQuant software suite v.1.6.6.0 (ref. 79) and the Andromeda search engine. The data were queried with the Andromeda search engine against the *C. elegans* and *E. coli* proteome databases appended with common laboratory protein contaminants. The higher-energy collisional dissociation MS/MS spectra were searched against an in silico tryptic digest of *C. elegans* proteins from the UniProt/Swiss-Prot sequence database (v.2019_09) containing 27,028 sequences, including common contaminant proteins. All MS/MS spectra were searched with the following MaxQuant parameters: acetyl (protein N terminus), M oxidation; cysteine carbamidomethylation was set as fixed modification; maximum of two missed cleavages and precursors were initially matched to 4.5 ppm tolerance and 20 ppm for fragment spectra. Peptide spectrum matches and proteins were automatically filtered to a 1% FDR based on the Andromeda score, peptide length and individual peptide mass errors. Proteins were identified and quantified based on at least two unique peptides and the label-free quantification (LFQ)⁸⁰ values reported by MaxQuant. The resulting protein groups were imported into Perseus⁸¹. Data were filtered to include proteins identified with two peptides or more and those replicated in at least two of three replicates in at least one group. The data were log₂ transformed and a student's *t*-test was used to identify statistically significant proteins. Significant proteins were considered as proteins with more than one peptide per protein, fold change (FC) > 2 and FDR > 0.05. Enrichment analyses were performed using g:Profiler.

Oocyte fertilizability analysis

Synchronized hermaphrodites were mated with young (day 1) *fog-2* males at L4 stage. After 24 h, hermaphrodites were singled out and were allowed to reproduce for 1 d. The number of fertilized embryos (either hatched or unhatched) and unfertilized oocytes produced by each individual were counted daily. *P* values were calculated using a chi-squared test.

BCAA assay

Assays were performed using the Branched-Chain Amino Acid Assay kit (Abcam, ab83374) according to the manufacturer's manual with the following modifications. At least 70 worms per condition were Dounce homogenized in 500 μ l assay buffer. Reads were normalized to total protein concentration as measured using the Quant-iT Protein Assay kit. OD was measured at 450 nm using the Synergy MX microplate reader.

mtROS assay

mtROS assays were conducted according to published protocols. To validate appropriate staining, synchronized adult N2 worms at day 2 of adulthood were used. Two experimental groups were established: one group was washed and transferred to tubes containing S-basal medium with the addition of MitoTracker Red CM-H2XRos with or without 200 mM of paraquat to induce oxidative stress. The control group was washed and transferred to a tube containing S-basal medium only, without any dye or oxidative stress inducer. All groups of worms were then incubated for 3 h at room temperature. Following incubation, all worms were gently transferred to NGM plates for a 1-h recovery phase. Subsequently, the germlines of the worms were dissected and subjected to imaging (Extended Data Fig. 3). For RNAi experiments, synchronized hermaphrodites were transferred to RNAi plates at L4 stage and were transferred to fresh RNAi plates every 2 d to avoid progeny accumulation. For all other experiments, NGM plates were used. For assays testing vitamin B1, OP50-seeded NGM plates were used either with or without 5 mg ml⁻¹ vitamin B1. One day before imaging, worms were transferred to seeded plates with 20 μ M MitoTracker Red CM-H2XRos. On the day of imaging (either day 1 or day 5 of adulthood), worms were recovered for 1 h on seeded RNAi plates without MitoTracker Red CM-H2XRos. Worms were then put on slides with levamisole and dissected for germline imaging. Images were captured on a Nikon eclipse Ti at \times 60 magnification, focusing on the most mature oocyte (-1 oocyte). All figures shown were from the same experiment, imaged under the same conditions. For each image, a region of interest (ROI) of defined dimensions was drawn around the -1 oocyte. The ROIs were then denoised and deconvolved (using the NIS Elements Denoise.ai and 2D deconvolution functions, respectively) for better visualization of subcellular structures. All images in each figure were processed in the same way across the entire image (for example, adjusting for brightness and contrast).

TMRE assay

TMRE assays were conducted according to published protocols^{82–84}. To validate appropriate staining, synchronized adult N2 worms at day 2 of adulthood were divided into two groups: one was transferred to culture plates containing TMRE dye to assess mitochondrial membrane potential ($\Delta\Psi$ m), whereas the control group was placed on plates without dye. On the imaging day, worms from both groups were picked into tubes with S-basal medium, with one subset exposed to 10 μ M of FCCP (carbonyl cyanide 4 (trifluoromethoxy)phenylhydrazone) for 1 h at room temperature to induce mitochondrial membrane depolarization. Afterward, germlines were dissected and imaged, enabling the assessment of the impact of FCCP-induced changes in $\Delta\Psi$ m on oocytes (Extended Data Fig. 3). For TMRE assays, synchronized hermaphrodites were transferred to RNAi plates at the L4 stage and were transferred to fresh RNAi plates every 2 d to avoid progeny accumulation. A 0.5 M

stock solution of TMRE (Invitrogen, T669) was prepared in dimethylsulfoxide and kept at -20 °C. One day before imaging, worms were transferred to seeded RNAi plates with 1 mM TMRE (diluted in M9 buffer). On the day of imaging, worms were recovered for 1 h on seeded RNAi plates without TMRE. For assays testing vitamin B1, OP50-seeded NGM plates were used either with or without 5 mg ml⁻¹ vitamin B1. Worms were put on slides with levamisole and dissected for germline imaging. Images were captured on a Nikon eclipse Ti at \times 60 magnification, focusing on the most mature oocyte (-1 oocyte). All figures shown were from the same experiment, imaged under the same conditions. For each image, an ROI of defined dimensions was drawn around the -1 oocyte. The ROIs were then denoised and deconvolved (using the NIS Elements Denoise.ai and 2D deconvolution functions respectively) for better visualization of subcellular structures. All images in each figure were processed in the same way across the entire image (for example, adjusting for brightness and contrast).

Late-mated reproductive span assay

Late-mated reproductive span assays were performed as previously described⁸⁵. In brief, hypochlorite-synchronized eggs were placed on plates seeded with OP50 *E. coli*. Starting on L4 stage, ~25 hermaphrodites were transferred to plates freshly seeded with HT115 *E. coli* containing either empty control vector or RNAi plasmid. Worms were transferred to fresh RNAi plates every 2 d to avoid progeny accumulation. On the day of late mating, single hermaphrodites and three young *fog-2(q71)* males were transferred to plates seeded with the corresponding HT115 RNAi or control *E. coli* strain. Progeny production was assessed after 4–5 d. All late mating assays were performed at 20 °C.

Full reproductive span

Reproductive span assays were performed either on plates as previously described¹³ or using the lab-on-a-chip device CeLab⁸⁶. For both reproductive span assay methods, hypochlorite-synchronized L4 hermaphrodites were mated for 24 h with young adult (day 1) *fog-2(q71)* males at a 1:3 ratio. For assays on plates, each hermaphrodite was moved daily to individual fresh plates until progeny production ceased for 2 d consecutively. The day of reproductive cessation was counted as the last day of viable progeny production preceding 2 d consecutively with no progeny. This was assessed by evaluating plates for progeny 2 d after the hermaphrodites had been moved to fresh plates. Successful mating was verified by evaluating the fraction of male progeny produced.

For CeLab reproductive span assays, chips were fabricated using standard soft lithography to create 200 parallel incubation arenas within each chip. Day-1 worms were loaded into the CeLab chip as previously described⁸⁶. Animals were incubated in S-medium with 60 OD600 OP50-1, 50 mg l⁻¹ streptomycin and 10 mg l⁻¹ nystatin. For RNAi experiments, bacteria were induced with 4 mM IPTG, pelleted and resuspended with 2 ml S-medium with 50 mg l⁻¹ streptomycin, 10 mg l⁻¹ nystatin, 100 μ g ml⁻¹ carbenicillin and 4 mM IPTG before incubation. Worm survival was scored daily using CeAid⁸⁷. After each scoring session, progeny were flushed out of the chip using M9 buffer solution for 20 min and the bacteria incubation solution was replenished. Animals were censored, if needed, on the day of loss. Matricide animals were censored the day after. All reproductive spans were performed at 20 °C.

For experiments including supplements, all supplements were added to worms starting at day 1 of adulthood. Supplements were added at the appropriate concentration to 10 \times concentrated heat-killed OP50 *E. coli*. Bacteria were heat-killed by pelleting and resuspending at 10 \times in double-distilled water. Bacteria were heated at 65 °C for 30 min before supplement addition.

Oocyte quality assay

Oocyte quality assays were performed as previously described^{9,18}. For RNAi experiments, synchronized hermaphrodites were transferred to

RNAi plates at L4 stage. Worms were transferred to fresh corresponding RNAi plates every 2 d to avoid progeny accumulation. Hermaphrodites were mated on day 3 of adulthood for 24 h with young adult (day 1) *fog-2(q71)* males at a 1:3 ratio. For all other experiments, OP50-seeded NGM plates were used. For assays testing vitamin B1, OP50-seeded NGM plates were used with 5 mg ml⁻¹ vitamin B1, starting at day 1 of adulthood. Hermaphrodites were mated at L4 stage for 24 h with young adult (day 1) *fog-2(q71)* males at a 1:3 ratio. Following mating, hermaphrodites were transferred to new plates. Mating was confirmed by the presence of male progeny. On the day of imaging, worms were mounted on slides with 2% agarose pads containing levamisole. Images were captured on a Nikon eclipse Ti at ×60 magnification. Scoring was performed blind, and each image was given a score based on the criteria detailed in the relevant figure.

Lifespan assay

Lifespan assays were performed either on plates as previously described¹⁴ or using the lab-on-a-chip device CeLab⁸⁶. For plate assays, synchronized hermaphrodites were placed on plates at day 1 of adulthood. Hermaphrodites were transferred to freshly seeded plates every other day when producing progeny and 2–3 d thereafter.

For CeLab assays, day-1 worms were loaded into CeLab chips. Animals were incubated in S-medium with OD600 OP50-1, 50 mg l⁻¹ streptomycin and 10 mg l⁻¹ nystatin.

For RNAi experiments, bacteria were induced with 4 mM IPTG, pelleted, and resuspended with bacteria with 2 ml S-medium with 50 mg l⁻¹ streptomycin, 10 mg l⁻¹ nystatin, 100 µg ml⁻¹ carbenicillin and 4 mM IPTG before incubation. Survival was scored daily using CeAid⁸⁷. After each scoring session, progeny were flushed out of the chip using M9 buffer solution for 20 min and then the incubation solution was replenished. Worms were censored, if necessary, on the day of matricide, after the appearance of abnormal vulval structures or loss. Animals were defined as dead when they no longer responded to touch. All lifespans were performed at 20 °C.

For the experiments including supplements, all supplements were added to worms starting at day 1 of adulthood. Supplements were added at the appropriate concentration to 10× concentrated heat-killed OP50 *E. coli* as previously described.

Germline mitochondria imaging

Worms were synchronized and transferred to RNAi plates at the L4 stage. Hermaphrodites were then maintained on RNAi plates and transferred to fresh RNAi plates every 2 d to avoid progeny accumulation.

On the day of germline imaging, worms were mounted on slides with 2% agarose pads and levamisole. Images were captured on either a Nikon eclipse Ti at ×60 magnification or on a Nikon Ti-2 CSU-W1 spinning disc confocal with SoRa super-resolution technology. For Nikon Ti-2 CSU-W1 spinning disc confocal, a ×100/1.4 NA silicone oil objective was used for imaging, and a Hamamatsu BT Fusion sCMOS (6.5 µm pixel with 93% QE) camera was used for detection. Z stacks were acquired using 561 nm excitation wavelength to image mKate2-labelled mitochondria and a single-slice DIC image of the worm was acquired in the centre of the Z stack for reference. Z stacks were processed using the Nikon NIS elements software. The three-dimensional (3D) volumetric views and movies were created using NIS Elements 'Volume projection' and movie maker, respectively.

Scoring was performed blind. Each image was scored as normal (youthful oocyte characteristics: cuboidal shape, uniform size and organized in the gonad) or abnormal, while focusing on the mature oocytes. Images were processed in Fiji and Adobe Photoshop across the entire Z stack. For each figure, images shown were from the same experiment, imaged on the same microscope at the same magnification and with the same exposure. All images in each figure were processed in the same way across the entire image (for example, maximum intensity for Z stack, adjusting for brightness and contrast).

Oocyte collection for RNA sequencing

BA17 or CQ733 worms were synchronized by bleaching and sterilized by incubation at 25 °C from L2 to L4. Starting at L4, worms were washed with M9 and transferred to freshly seeded NGM plates every other day. PX627 or CQ730 worms were synchronized and sterilized by bleaching on seeded NGM plates supplemented with 2.5 ml 400 mM indole-3-acetic acid (IAA; Alfa Aesar, A10556) freshly prepared in ethanol. Worms were maintained on auxin plates until the L4 stage. At L4, worms were washed with M9 buffer and were transferred to 0.1 M IPTG- induced RNAi plates, seeded with either L4440- or *bcat-1* RNAi-expressing bacteria. Worms were then washed with M9 and transferred to freshly seeded RNAi plates every other day. On day 8 of adulthood, oocytes were extracted as was previously described¹⁸, by cutting worms in egg salts buffer, followed by repeated nylon net filtration/centrifugation. The final oocyte pellet was resuspended with 1 ml Trizol LS and kept at –80 °C.

RNA isolation and RNA sequencing

RNA was isolated from purified oocytes by Trizol-chloroform extraction and cleanup using a RNeasy Micro kit (QIAGEN). Purified total RNA samples were first examined on Bioanalyzer 2100 using RNA 6000 Pico chips to evaluate the integrity and concentration (Agilent Technologies). The poly-A-containing RNA transcripts in these samples were converted to cDNA using barcoded oligo-dT primers in a reverse transcription reaction to index each sample following the drop-seq method⁸⁸. The pooled barcoded cDNA samples were purified and amplified by PCR and then turned into sequencing libraries using the Nextera kit (Illumina) to include only the poly-A tail adjacent 3' ends of RNA transcripts. These libraries were sequenced on Illumina NovaSeq 6000S Prime flowcell using a 100-cycle v.1.5 kit. Raw sequencing reads were filtered by Illumina NovaSeq Control Software and only the pass-filter reads were used for further analysis. Sequences were mapped to ce11 using RNA STAR and counts were determined using HTSeq-count and the Ensembl-provided gff file. DESeq2 was then used to determine differential expression.

GSEA

DESeq2 was used to identify differentially expressed genes from *daf-2;control(RNAi)* compared with *daf-2;bcat-1(RNAi)* with an FDR of 5% and log₂FC > 1. GSEA software (v.4.3.2) was then used to test whether the *daf-2* upregulated genes (*bcat-1*-dependent *daf-2* genes) were significantly enriched in microarray data obtained from day 1 versus day 5 oocytes in a *fem-1* background. For GSEA of oocytes from *bcat-1* OE worms compared with *daf-2* oocytes, *daf-2* upregulated and downregulated gene sets were obtained from Templeman et al.¹⁸. Each gene set was then tested for enrichment among a ranked list obtained from DESeq2 comparing day 8 oocytes from *bcat-1* OE worms compared with control oocytes.

Microarray analysis

Data from scanned microarrays were loaded onto the Princeton University MicroArray database (PUMAdb) and analysed as previously described⁸⁹. Genes were filtered for the presence in at least 60% of arrays (uncentered correlation and average linking). One-class Significance Analysis of Microarrays was used to identify differentially expressed genes and to generate a ranked list of genes expressed day 1 versus day 5 oocytes using per-gene Significance Analysis of Microarrays scores.

Gene Ontology analysis

Upregulated and downregulated differentially expressed genes from RNA-seq experiments were separately analysed using g:Profiler (v.e109_eg56_p17_1d3191d).

Data collection

No statistical methods were used to predetermine sample sizes but our sample sizes are similar to those reported in previous publications.

Data distribution was assumed to be normal but this was not formally tested. Animals were randomized during assignment to experimental groups. Data points were not excluded from any analysis unless noted and explained in the Methods. Except as noted in specific Methods, data collection and analysis were not performed blind to the conditions of the experiments.

Quantification and statistical analysis

For late-mated reproduction assays, chi-squared tests were used to compare the percentages of worm populations capable of progeny production. Full reproductive span and lifespan assays were assessed using standard Kaplan–Meier log-rank survival tests, with the first day of adulthood of synchronized hermaphrodites defined as $t = 0$. For oocyte quality and fertilizability experiments, chi-squared tests were used to determine whether there were significant differences between populations for each category of scored phenotypes. Unpaired t -tests were used for BCAA level comparisons, for normal/abnormal germline mitochondria scoring and for comparing mtROS. For BCAA assays, reads below the detection limit were excluded.

Reporting summary

Further information on research design is available in the Nature Portfolio Reporting Summary linked to this article.

Data availability

All RNA-seq data are deposited under the [PRJNA966212](https://www.ncbi.nlm.nih.gov/bioproject/PRJNA966212) BioProject. Microarray data are available on the PUMA database at <http://puma.princeton.edu> as experiment set 7,368. Proteomics data are available on PRIDE under accession code [PXDO48296](https://www.ebi.ac.uk/pride/archive/projects/PXD048296). Source data are provided with this paper.

Code availability

No custom code was used for this study.

References

- Duncan, F. E., Confino, R. & Pavone, M. E. in *Conn's Handbook of Models for Human Aging*. 2nd Edn (eds Ram, J. L. & Conn, P. M.) 109–130 (Academic Press, 2018).
- Huber, S. & Fieder, M. Evidence for a maximum 'shelf-life' of oocytes in mammals suggests that human menopause may be an implication of meiotic arrest. *Sci. Rep.* **8**, 14099 (2018).
- Mathews, T. J. & Hamilton, B. E. Mean age of mothers is on the rise: United States, 2000–2014. *NCHS Data Brief.* **232**, 1–8 (2016).
- Tilly, J. L. & Sinclair, D. A. Germline energetics, aging, and female infertility. *Cell Metab.* **17**, 838–850 (2013).
- van der Reest, J., Nardini Cecchino, G., Haigis, M. C. & Kordowitzki, P. Mitochondria: their relevance during oocyte ageing. *Ageing Res. Rev.* **70**, 101378 (2021).
- Broekmans, F. J., Soules, M. R. & Fauser, B. C. Ovarian aging: mechanisms and clinical consequences. *Endocr. Rev.* **30**, 465–493 (2009).
- te Velde, E. R. & Pearson, P. L. The variability of female reproductive ageing. *Hum. Reprod. Update* **8**, 141–154 (2002).
- Hughes, S. E., Evans, K., Xiong, C. & Kornfeld, K. Genetic and pharmacological factors that influence reproductive aging in nematodes. *PLoS Genet.* **3**, e25 (2007).
- Luo, S., Kleemann, G. A., Ashraf, J. M., Shaw, W. M. & Murphy, C. T. TGF- β and insulin signaling regulate reproductive aging via oocyte and germline quality maintenance. *Cell* **143**, 299–312 (2010).
- Hamatani, T. et al. Age-associated alteration of gene expression patterns in mouse oocytes. *Hum. Mol. Genet.* **13**, 2263–2278 (2004).
- Steuerwald, N. M., Bermúdez, M. G., Wells, D., Munné, S. & Cohen, J. Maternal age-related differential global expression profiles observed in human oocytes. *Reprod. Biomed. Online* **14**, 700–708 (2007).
- Mishina, T. et al. Single-oocyte transcriptome analysis reveals aging-associated effects influenced by life stage and calorie restriction. *Aging Cell* **20**, e13428 (2021).
- Luo, S., Shaw, W. M., Ashraf, J. & Murphy, C. T. TGF- β Sma/Mab signaling mutations uncouple reproductive aging from somatic aging. *PLoS Genet.* **5**, e1000789 (2009).
- Kenyon, C., Chang, J., Gensch, E., Rudner, A. & Tabtiang, R. A *C. elegans* mutant that lives twice as long as wild type. *Nature* **366**, 461–464 (1993).
- Hahm, J.-H. et al. *C. elegans* maximum velocity correlates with healthspan and is maintained in worms with an insulin receptor mutation. *Nat. Commun.* **6**, 8919 (2015).
- Garigan, D. et al. Genetic analysis of tissue aging in *Caenorhabditis elegans*: a role for heat-shock factor and bacterial proliferation. *Genetics* **161**, 1101–1112 (2002).
- Huang, C., Xiong, C. & Kornfeld, K. Measurements of age-related changes of physiological processes that predict lifespan of *Caenorhabditis elegans*. *Proc. Natl Acad. Sci. USA* **101**, 8084–8089 (2004).
- Templeman, N. M. et al. Insulin signaling regulates oocyte quality maintenance with age via cathepsin B activity. *Curr. Biol.* **28**, 753–760.e4 (2018).
- Athar, F. & Templeman, N. M. *C. elegans* as a model organism to study female reproductive health. *Comp. Biochem. Physiol. A Mol. Integr. Physiol.* **266**, 111152 (2022).
- Llonch, S. et al. Single human oocyte transcriptome analysis reveals distinct maturation stage-dependent pathways impacted by age. *Aging Cell* **20**, e13360 (2021).
- Zhang, D., Keilty, D., Zhang, Z. & Chian, R. Mitochondria in oocyte aging: current understanding. *Facts Views Vis. ObGyn* **9**, 29–38 (2017).
- Rodríguez-Nuevo, A. et al. Oocytes maintain ROS-free mitochondrial metabolism by suppressing complex I. *Nature* **607**, 756–761 (2022).
- Cota, V., Sohrabi, S., Kaletsky, R. & Murphy, C. T. Oocyte mitophagy is critical for extended reproductive longevity. *PLoS Genet.* **18**, e1010400 (2022).
- Meldrum, D. R. et al. Aging and the environment affect gamete and embryo potential: can we intervene? *Fertil. Steril.* **105**, 548–559 (2016).
- Simsek-Duran, F. et al. Age-associated metabolic and morphologic changes in mitochondria of individual mouse and hamster oocytes. *PLoS ONE* **8**, e64955 (2013).
- Min, H., Lee, M., Cho, K. S., Lim, H. J. & Shim, Y.-H. Nicotinamide supplementation improves oocyte quality and offspring development by modulating mitochondrial function in an aged *Caenorhabditis elegans* model. *Antioxidants* **10**, 519 (2021).
- Song, C. et al. Melatonin improves age-induced fertility decline and attenuates ovarian mitochondrial oxidative stress in mice. *Sci. Rep.* **6**, 35165 (2016).
- Narayan, V. et al. Deep proteome analysis identifies age-related processes in *C. elegans*. *Cell Syst.* **3**, 144–159 (2016).
- Meissner, B. et al. Determining the sub-cellular localization of proteins within *Caenorhabditis elegans* body wall muscle. *PLoS ONE* **6**, e19937 (2011).
- Bratic, I. et al. Mitochondrial DNA level, but not active replicase, is essential for *Caenorhabditis elegans* development. *Nucleic Acids Res.* **37**, 1817–1828 (2009).
- Gitschlag, B. L. et al. Homeostatic responses regulate selfish mitochondrial genome dynamics in *C. elegans*. *Cell Metab.* **24**, 91–103 (2016).
- Tsang, W. Y. & Lemire, B. D. Mitochondrial genome content is regulated during nematode development. *Biochem. Biophys. Res. Commun.* **291**, 8–16 (2002).

33. Murphy, C. T. et al. Genes that act downstream of DAF-16 to influence the lifespan of *Caenorhabditis elegans*. *Nature* **424**, 277–283 (2003).
34. Guan, Y. et al. SKP1 drives the prophase I to metaphase I transition during male meiosis. *Sci. Adv.* **6**, eaaz2129 (2020).
35. Kinterova, V., Kanka, J., Petruskova, V. & Toralova, T. Inhibition of Skp1-Cullin-F-box complexes during bovine oocyte maturation and preimplantation development leads to delayed development of embryos. *Biol. Reprod.* **100**, 896–906 (2019).
36. Nadarajan, S., Govindan, J. A., McGovern, M., Hubbard, E. J. A. & Greenstein, D. MSP and GLP-1/Notch signaling coordinately regulate actomyosin-dependent cytoplasmic streaming and oocyte growth in *C. elegans*. *Dev. Camb. Engl.* **136**, 2223–2234 (2009).
37. Vanorny, D. A. & Mayo, K. E. The role of Notch signaling in the mammalian ovary. *Reproduction* **153**, R187–R204 (2017).
38. Agarwal, S. & Ganesh, S. Perinuclear mitochondrial clustering, increased ROS levels, and HIF1 are required for the activation of HSF1 by heat stress. *J. Cell Sci.* <https://doi.org/10.1242/jcs.245589> (2020).
39. Mor, D. E. et al. Metformin rescues Parkinson's disease phenotypes caused by hyperactive mitochondria. *Proc. Natl Acad. Sci. USA* **117**, 26438–26447 (2020).
40. Mansfeld, J. et al. Branched-chain amino acid catabolism is a conserved regulator of physiological ageing. *Nat. Commun.* **6**, 10043 (2015).
41. Luo, S. & Murphy, C. T. *Caenorhabditis elegans* reproductive aging: regulation and underlying mechanisms. *Genesis* **49**, 53–65 (2011).
42. Pinkston-Gosse, J. & Kenyon, C. DAF-16/FOXO targets genes that regulate tumor growth in *Caenorhabditis elegans*. *Nat. Genet.* **39**, 1403–1409 (2007).
43. Austin, M. U. et al. Knockout of the folate transporter *folT-1* causes germline and somatic defects in *C. elegans*. *BMC Dev. Biol.* **10**, 46 (2010).
44. Strandgaard, T. et al. Maternally contributed folate receptor 1 is expressed in ovarian follicles and contributes to preimplantation development. *Front. Cell Dev. Biol.* **5**, 89 (2017).
45. Mann, G., Mora, S., Madu, G. & Adegoke, O. A. J. Branched-chain amino acids: catabolism in skeletal muscle and implications for muscle and whole-body metabolism. *Front. Physiol.* **12**, 702826 (2021).
46. Palmieri, F., Monné, M., Fiermonte, G. & Palmieri, L. Mitochondrial transport and metabolism of the vitamin B-derived cofactors thiamine pyrophosphate, coenzyme A, FAD and NAD⁺, and related diseases: a review. *IUBMB Life* **74**, 592–617 (2022).
47. Marrs, C. & Lonsdale, D. Hiding in plain sight: modern thiamine deficiency. *Cells* **10**, 2595 (2021).
48. Ravanelli, S. et al. Reprogramming of proteasomal degradation by branched chain amino acid metabolism. *Aging Cell* **21**, e13725 (2022).
49. Watson, E. et al. Metabolic network rewiring of propionate flux compensates vitamin B12 deficiency in *C. elegans*. *eLife* **5**, e17670 (2016).
50. Walker, M. D. et al. WormPaths: *Caenorhabditis elegans* metabolic pathway annotation and visualization. *Genetics* **219**, iyab089 (2021).
51. Yu, D. et al. The adverse metabolic effects of branched-chain amino acids are mediated by isoleucine and valine. *Cell Metab.* **33**, 905–922 (2021).
52. Weaver, K. J., Holt, R. A., Henry, E., Lyu, Y. & Pletcher, S. D. Effects of hunger on neuronal histone modifications slow aging in *Drosophila*. *Science* **380**, 625–632 (2023).
53. Yao, V. et al. An integrative tissue-network approach to identify and test human disease genes. *Nat. Biotechnol.* <https://doi.org/10.1038/nbt.4246> (2018).
54. Li, H. et al. Defect of branched-chain amino acid metabolism promotes the development of Alzheimer's disease by targeting the mTOR signaling. *Biosci. Rep.* **38**, BSR20180127 (2018).
55. Gao, A. W. et al. Identification of key pathways and metabolic fingerprints of longevity in *C. elegans*. *Exp. Gerontol.* **113**, 128–140 (2018).
56. Juricic, P., Grönke, S. & Partridge, L. Branched-chain amino acids have equivalent effects to other essential amino acids on lifespan and aging-related traits in *Drosophila*. *J. Gerontol. A Biol. Sci. Med. Sci.* **75**, 24–31 (2020).
57. Richardson, N. E. et al. Lifelong restriction of dietary branched-chain amino acids has sex-specific benefits for frailty and lifespan in mice. *Nat. Aging* **1**, 73–86 (2021).
58. Nishi, K. et al. Branched-chain keto acids inhibit mitochondrial pyruvate carrier and suppress gluconeogenesis in hepatocytes. *Cell Rep.* **42**, 112641 (2023).
59. Ferguson, D. et al. Mitochondrial pyruvate carrier inhibition initiates metabolic crosstalk to stimulate branched chain amino acid catabolism. *Mol. Metab.* **70**, 101694 (2023).
60. Liemburg-Apers, D. C., Willems, P. H. G. M., Koopman, W. J. H. & Grefte, S. Interactions between mitochondrial reactive oxygen species and cellular glucose metabolism. *Arch. Toxicol.* **89**, 1209–1226 (2015).
61. Fernhoff, P. M. et al. Thiamine response in maple syrup urine disease. *Pediatr. Res.* **19**, 1011–1016 (1985).
62. Danner, D. J., Davidson, E. D. & Elsas, L. J. Thiamine increases the specific activity of human liver branched chain α -ketoacid dehydrogenase. *Nature* **254**, 529–530 (1975).
63. Mouchiroud, L. et al. Pyruvate imbalance mediates metabolic reprogramming and mimics lifespan extension by dietary restriction in *Caenorhabditis elegans*. *Aging Cell* **10**, 39–54 (2011).
64. Chin, R. M. et al. The metabolite α -ketoglutarate extends lifespan by inhibiting ATP synthase and TOR. *Nature* **510**, 397–401 (2014).
65. Cabreiro, F. et al. Metformin retards aging in *C. elegans* by altering microbial folate and methionine metabolism. *Cell* **153**, 228–239 (2013).
66. Li-Leger, E. et al. Identification of essential genes in *Caenorhabditis elegans* through whole-genome sequencing of legacy mutant collections. *G3* **11**, jkab328 (2021).
67. *C. elegans* Deletion Mutant Consortium. large-scale screening for targeted knockouts in the *Caenorhabditis elegans* genome. *G3* **2**, 1415–1425 (2012).
68. Tsuji, A., Nakamura, T. & Shibata, K. Effects of mild and severe vitamin B1 deficiencies on the meiotic maturation of mice oocytes. *Nutr. Metab. Insights* **10**, 1178638817693824 (2017).
69. Ishii, N. et al. Coenzyme Q10 can prolong *C. elegans* lifespan by lowering oxidative stress. *Mech. Ageing Dev.* **125**, 41–46 (2004).
70. Institute of Medicine (US) Standing Committee on the Scientific Evaluation of Dietary Reference Intakes and its Panel on Folate, Other B Vitamins, and Choline. *Dietary Reference Intakes for Thiamin, Riboflavin, Niacin, Vitamin B6, Folate, Vitamin B12, Pantothenic Acid, Biotin, and Choline*. (National Academies Press, 1998).
71. Blair, M. C., Neinast, M. D. & Arany, Z. Whole-body metabolic fate of branched-chain amino acids. *Biochem. J.* **478**, 765–776 (2021).
72. Sieber, M. H., Thomsen, M. B. & Spradling, A. C. Electron transport chain remodeling by GSK3 during oogenesis connects nutrient state to reproduction. *Cell* **164**, 420–432 (2016).
73. Li, M. et al. Integrative proteome analysis implicates aberrant RNA splicing in impaired developmental potential of aged mouse oocytes. *Aging Cell* **20**, e13482 (2021).
74. Mu, L. et al. PPM1K-regulated impaired catabolism of branched-chain amino acids orchestrates polycystic ovary syndrome. *eBioMedicine* **89**, 104492 (2023).

75. Ntostis, P. et al. The impact of maternal age on gene expression during the GV to MII transition in euploid human oocytes. *Hum. Reprod.* **37**, 80–92 (2021).
76. Gandre, S. & van der Blik, A. M. Mitochondrial division in *Caenorhabditis elegans*. *Methods Mol. Biol.* **372**, 485–501 (2007).
77. Wieckowski, M. R., Giorgi, C., Lebedzinska, M., Duszynski, J. & Pinton, P. Isolation of mitochondria-associated membranes and mitochondria from animal tissues and cells. *Nat. Protoc.* **4**, 1582–1590 (2009).
78. Annunziata, I., Patterson, A. & d’Azzo, A. Mitochondria-associated ER membranes (MAMs) and glycosphingolipid enriched microdomains (GEMs): isolation from mouse brain. *J. Vis. Exp.* <https://doi.org/10.3791/50215> (2013).
79. Cox, J. & Mann, M. MaxQuant enables high peptide identification rates, individualized p.p.b.-range mass accuracies and proteome-wide protein quantification. *Nat. Biotechnol.* **26**, 1367–1372 (2008).
80. Cox, J. et al. Accurate proteome-wide label-free quantification by delayed normalization and maximal peptide ratio extraction, termed MaxLFQ*. *Mol. Cell. Proteom.* **13**, 2513–2526 (2014).
81. Tyanova, S. et al. The Perseus computational platform for comprehensive analysis of (prote)omics data. *Nat. Methods* **13**, 731–740 (2016).
82. Kwon, Y. J., Guha, S., Tuluc, F. & Falk, M. J. High-throughput BioSorter quantification of relative mitochondrial content and membrane potential in living *Caenorhabditis elegans*. *Mitochondrion* **40**, 42–50 (2018).
83. Charmpilas, N. & Tavernarakis, N. Mitochondrial maturation drives germline stem cell differentiation in *Caenorhabditis elegans*. *Cell Death Differ.* **27**, 601–617 (2020).
84. Sarasija, S. & Norman, K. R. Analysis of mitochondrial structure in the body wall muscle of *Caenorhabditis elegans*. *Bio-Protoc.* **8**, e2801 (2018).
85. Templeman, N. M., Cota, V., Keyes, W., Kaletsky, R. & Murphy, C. T. CREB non-autonomously controls reproductive aging through Hedgehog/Patched signaling. *Dev. Cell* **54**, 92–105 (2020).
86. Sohrobi, S., Cota, V. & Murphy, C. T. CeLab, a microfluidic platform for the study of life history traits, reveals metformin and SGK-1 regulation of longevity and reproductive span. *Lab Chip* **23**, 2738–2757 (2023).
87. Sohrobi, S., Moore, R. S. & Murphy, C. T. CeAid: a smartphone application for logging and plotting *Caenorhabditis elegans* assays. *G3* **11**, jkab259 (2021).
88. Macosko, E. Z. et al. Highly parallel genome-wide expression profiling of individual cells using nanoliter droplets. *Cell* **161**, 1202–1214 (2015).
89. Shaw, W. M., Luo, S., Landis, J., Ashraf, J. & Murphy, C. T. The *C. elegans* TGF- β Dauer pathway regulates longevity via insulin signaling. *Curr. Biol.* **17**, 1635–1645 (2007).

Acknowledgements

We thank H. Shwe and S. Kyin (Princeton Proteomics and Mass Spectrometry Core) for their assistance in sample processing and MS instrumentation, J. Miller and J. Volmar at the Genomics Core Facility of Princeton University for performing library preparation

and next-generation sequencing, G. Laevsky and S. Wang (Confocal Imaging Facility, a Nikon Center of Excellence, in the Department of Molecular Biology at Princeton University), The De Botton Protein Profiling Institute of the Nancy and Stephen Grand Israel National Center for Personalized Medicine Weizmann Institute of Science (Y. Levin), the Petry Laboratory and the Gitai Laboratory (the Department of Molecular Biology at Princeton University) for help with equipment, the CGC for strains and Murphy Laboratory members for comments on the manuscript. The study was supported by funding to C.T.M. from the Global Consortium for Reproductive Longevity and Equality (AWD1006679), The Simons Foundation (811235SPI), The Glenn Foundation for Medical Research and Pioneer (DP1AG077430) and Transformative (R01AT011963) grants from the National Institutes of Health.

Author contributions

Conceptualization was the responsibility of C.L., R.K. and C.T.M. Methodology was the responsibility of C.L., R.K. and C.T.M. Investigation was the responsibility of C.L., J.M.A., R.K., S.S., V.C., T.S., W.K. and S.L. Writing was the responsibility of C.L., R.K. and C.T.M. Funding acquisition was the responsibility of C.T.M.

Competing interests

The authors declare no competing interests.

Additional information

Extended data is available for this paper at <https://doi.org/10.1038/s42255-024-00996-y>.

Supplementary information The online version contains supplementary material available at <https://doi.org/10.1038/s42255-024-00996-y>.

Correspondence and requests for materials should be addressed to Coleen T. Murphy.

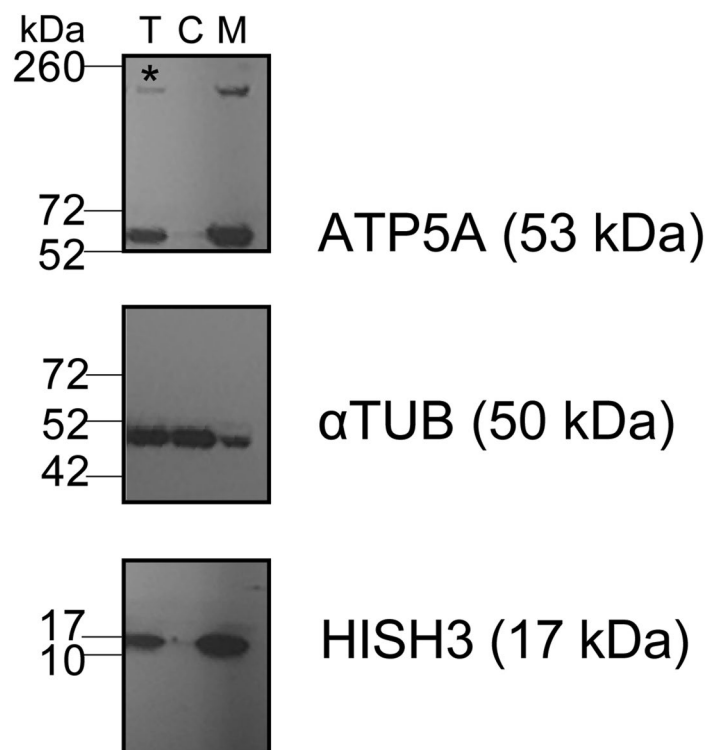
Peer review information *Nature Metabolism* thanks Patrick Bradshaw, Andrea Jurisicova and Michael Ristow for their contribution to the peer review of this work. Primary Handling Editor: Yanina-Yasmin Pesch, in collaboration with the *Nature Metabolism* team.

Reprints and permissions information is available at www.nature.com/reprints.

Publisher’s note Springer Nature remains neutral with regard to jurisdictional claims in published maps and institutional affiliations.

Springer Nature or its licensor (e.g. a society or other partner) holds exclusive rights to this article under a publishing agreement with the author(s) or other rightsholder(s); author self-archiving of the accepted manuscript version of this article is solely governed by the terms of such publishing agreement and applicable law.

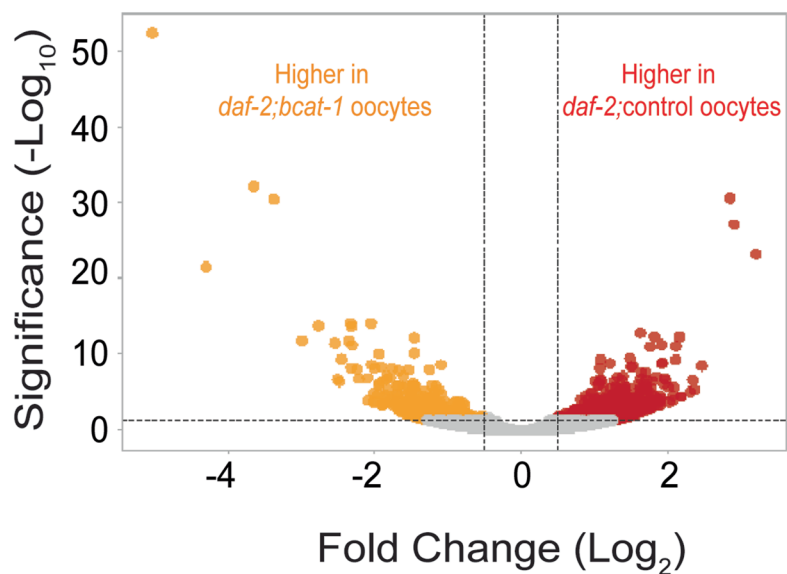
© The Author(s), under exclusive licence to Springer Nature Limited 2024



Extended Data Fig. 1 | Highly purified mitochondria are isolated from *C. elegans*. Representative western blot of the different cellular fractions. The mitochondrial marker ATP5A is prominently enriched in the membranous fraction, unlike the cytosolic marker α TUB. The membranous fraction was then loaded on a gradient to highly purify the mitochondrial fraction.

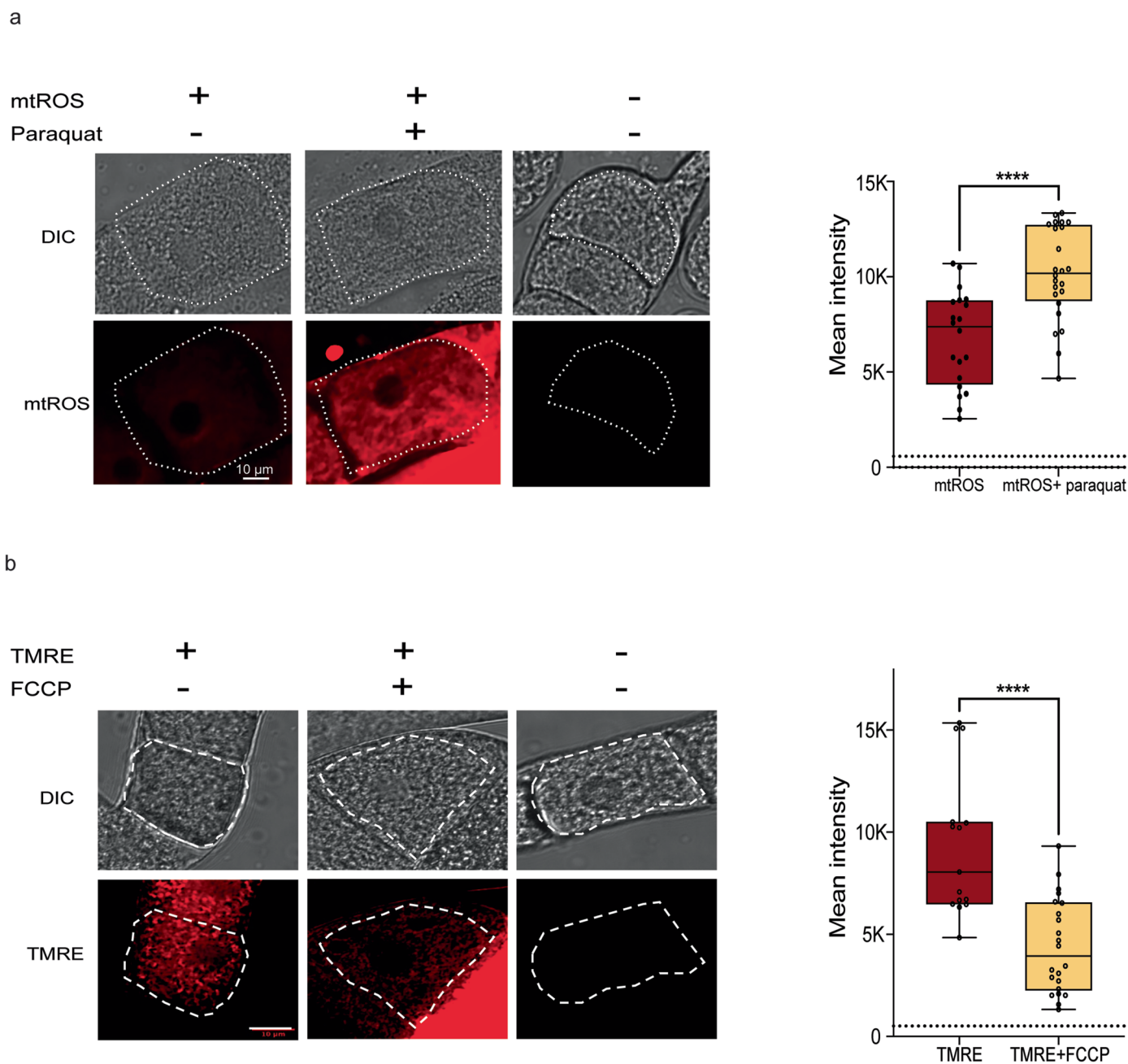
T- total homogenate, C- cytosolic fraction, M- crude membranes fraction. α TUB- α tubulin, HISH3- histone H3. The asterisk represents a non-specific band detected when using the anti-ATP5A antibody. Dashed lines mark where membranes were cut prior to incubation with the indicated antibody. 3 biological replicates were performed.

Differentially expressed genes- Day 8 oocytes



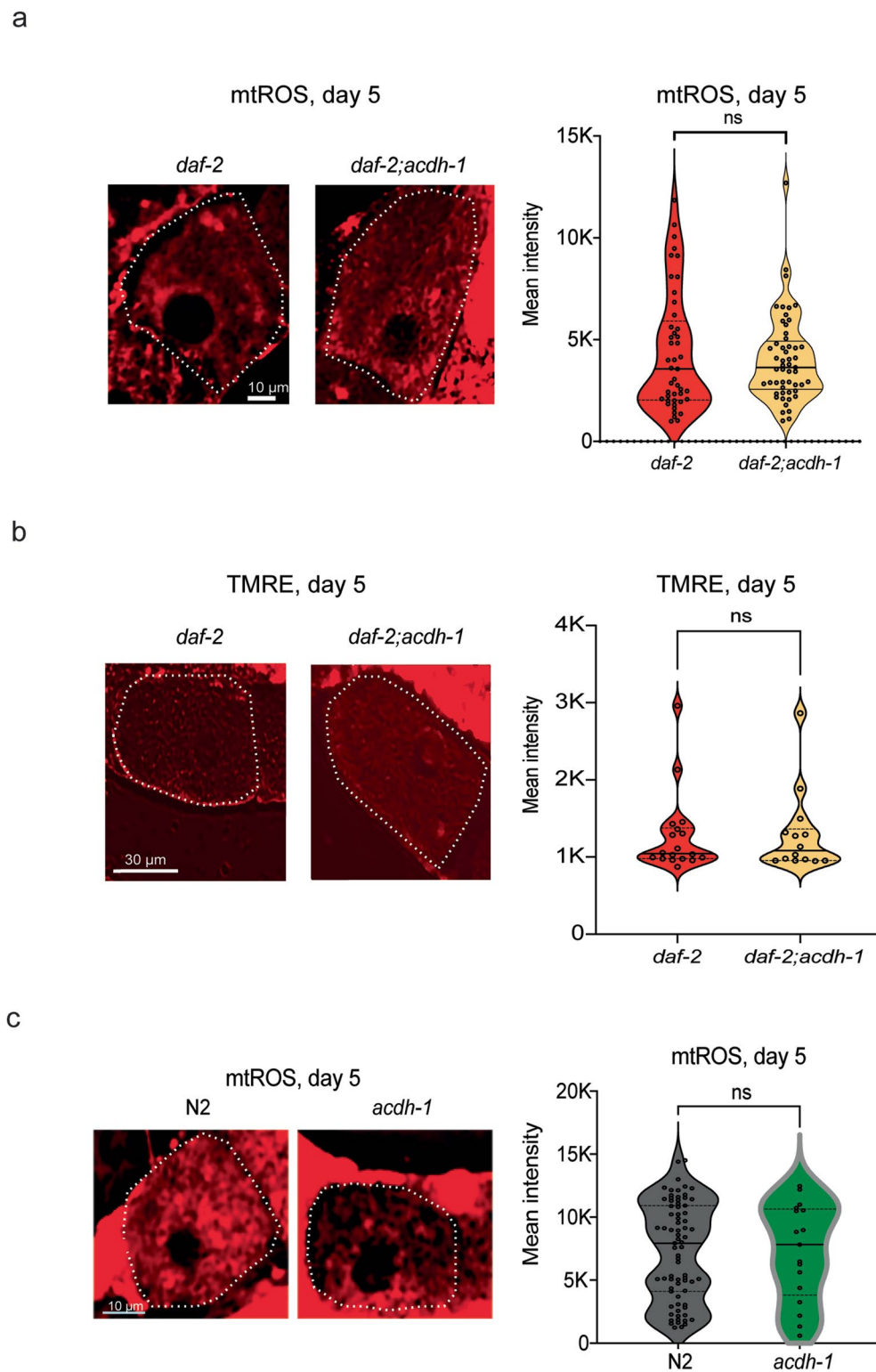
Extended Data Fig. 2 | Differentially expressed oocyte genes in day 8 *daf-2;control* and *daf-2;bcat-1(RNAi)* worms. Volcano plot of differentially expressed genes identified between *daf-2;control* and *daf-2;bcat-1(RNAi)* Day 8

oocytes. Red dots denote upregulated genes in *daf-2;control* oocytes, and orange dots denote genes downregulated in *daf-2;control* oocytes relative to *daf-2;bcat-1(RNAi)* ($0.5 < \log_2FC < -0.5$).



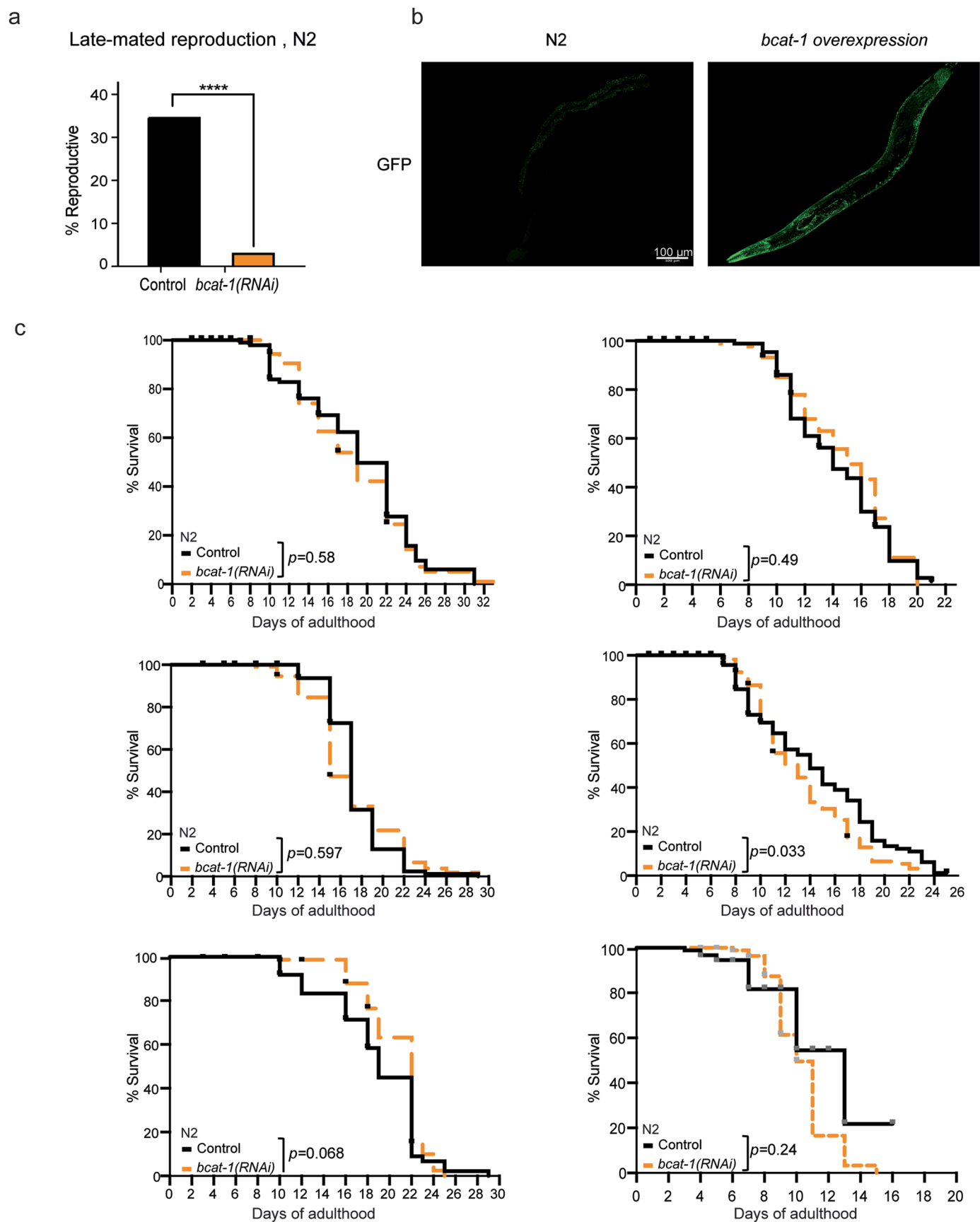
Extended Data Fig. 3 | Controls for mitochondrial assays. (a) mtROS levels increase in oocytes after paraquat treatment. A white dashed outline marks the most mature oocytes (~1 oocyte). Right: mtROS levels quantified in mature oocytes either with or without paraquat treatment. Control $n = 20$, Paraquat $n = 24$. (b) Left: FCCP treatment reduces mitochondrial membrane potential in oocytes. A white dashed outline marks the most mature oocytes (~1 oocyte).

Right: TMRE levels quantified in mature oocytes under control or FCCP treatment conditions. Control $n = 15$, FCCP $n = 22$. (a, b) Two-tailed, unpaired t-test. **** $p \leq 0.0001$. Dashed lines on the graphs represent mean intensity of autofluorescence. (a, b) Box plots: centre line, median; box range, 25–75th percentiles; whiskers denote minimum–maximum values. 3 biological replicates were performed.



Extended Data Fig. 4 | Deletion of *acd-1* in *daf-2* or wild-type worms does not affect mitochondrial function. (a) Left: mtROS levels do not change in *daf-2* mature oocytes on Day 5 upon *acd-1* deletion. Right: quantification of mtROS levels in *daf-2;acd-1* mature oocytes on day 5. $N \geq 45$ for each condition. Graph shows results of pooled three biological replicates. (b) Left: *acd-1* deletion does not affect mitochondrial membrane potential in *daf-2* mature oocytes on day 5. Right: quantification of TMRE signal in *daf-2* mature oocytes on Day 5 upon

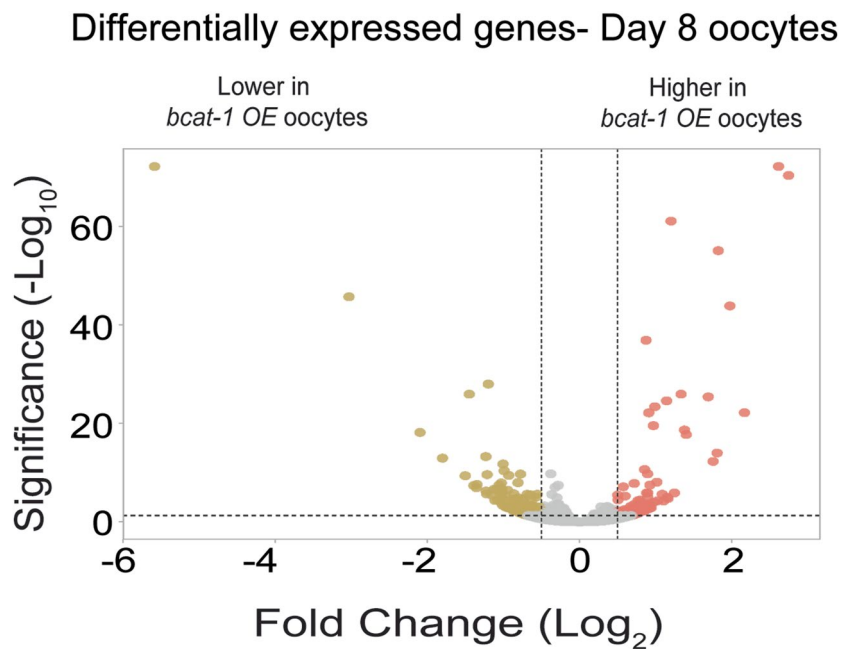
acd-1 deletion. $N > 10$ for all conditions. (c) Left: mtROS levels do not change in wild-type mature oocytes on Day 5 upon *acd-1* deletion. Right: quantification of mtROS levels in wild-type vs. *acd-1* mutant mature oocytes on day 5. $N \geq 17$ for each condition. Graph shows results of pooled three biological replicates. (a–c) A white dashed outline marks the most mature oocytes (~1 oocytes). Two-tailed, unpaired t-test. ns- nonsignificant. For all panels, representative images are shown. 3 biological replicates were performed.



Extended Data Fig. 5 | See next page for caption.

Extended Data Fig. 5 | Downregulating *bcat-1* in wild-type worms does not affect lifespan. (a) Downregulation of *bcat-1* reduces the late-mated reproduction of adult wild-type worms at day 6 of adulthood. $n = 69$ for control, $n = 58$ for *bcat-1(RNAi)*. Chi-square test. **** $p \leq 0.0001$. 3 biological replicates were performed. (b) GFP expression in control (left) and in the *bcat-1*-overexpression

strain (GFP-BCAT-1 protein fusion). 3 biological replicates were performed. (c) Adult-only knockdown of *bcat-1* does not affect the lifespan of wild-type animals. Lifespan data from 6 biological replicates are shown. Results are plotted as Kaplan–Meier survival curves, and the p -values were calculated using Mantel–Cox log-ranking. All replicates are shown. Statistical data is detailed in Table S2.



Extended Data Fig. 6 | Differentially expressed oocyte genes in day 8 control and *bcat-1* overexpressing worms. Volcano plot of differentially expressed genes identified between Day 8 oocytes from *bcat-1*-overexpressing worms

compared to the control (DESeq2, $\text{padj} < 0.05$). Pink dots denote upregulated genes in oocytes from *bcat-1* overexpressing worms, and gold dots denote downregulated genes ($0.5 < \log_2\text{FC} < -0.5$).

Reporting Summary

Nature Portfolio wishes to improve the reproducibility of the work that we publish. This form provides structure for consistency and transparency in reporting. For further information on Nature Portfolio policies, see our [Editorial Policies](#) and the [Editorial Policy Checklist](#).

Statistics

For all statistical analyses, confirm that the following items are present in the figure legend, table legend, main text, or Methods section.

- | n/a | Confirmed |
|-------------------------------------|--|
| <input type="checkbox"/> | <input checked="" type="checkbox"/> The exact sample size (n) for each experimental group/condition, given as a discrete number and unit of measurement |
| <input type="checkbox"/> | <input checked="" type="checkbox"/> A statement on whether measurements were taken from distinct samples or whether the same sample was measured repeatedly |
| <input type="checkbox"/> | <input checked="" type="checkbox"/> The statistical test(s) used AND whether they are one- or two-sided
<i>Only common tests should be described solely by name; describe more complex techniques in the Methods section.</i> |
| <input type="checkbox"/> | <input checked="" type="checkbox"/> A description of all covariates tested |
| <input type="checkbox"/> | <input checked="" type="checkbox"/> A description of any assumptions or corrections, such as tests of normality and adjustment for multiple comparisons |
| <input type="checkbox"/> | <input checked="" type="checkbox"/> A full description of the statistical parameters including central tendency (e.g. means) or other basic estimates (e.g. regression coefficient) AND variation (e.g. standard deviation) or associated estimates of uncertainty (e.g. confidence intervals) |
| <input type="checkbox"/> | <input checked="" type="checkbox"/> For null hypothesis testing, the test statistic (e.g. F , t , r) with confidence intervals, effect sizes, degrees of freedom and P value noted
<i>Give P values as exact values whenever suitable.</i> |
| <input checked="" type="checkbox"/> | <input type="checkbox"/> For Bayesian analysis, information on the choice of priors and Markov chain Monte Carlo settings |
| <input checked="" type="checkbox"/> | <input type="checkbox"/> For hierarchical and complex designs, identification of the appropriate level for tests and full reporting of outcomes |
| <input checked="" type="checkbox"/> | <input type="checkbox"/> Estimates of effect sizes (e.g. Cohen's d , Pearson's r), indicating how they were calculated |

Our web collection on [statistics for biologists](#) contains articles on many of the points above.

Software and code

Policy information about [availability of computer code](#)

Data collection	Easy-nLC 1200 UPLC Synergy MX microplate reader Nikon eclipse Ti CeLab Nikon Ti-2 CSU-W1 spinning disk confocal with SoRa super-resolution technology Bioanalyzer 2100 Illumina NovaSeq 6000 S Prime
Data analysis	MaxQuant software suite 1.6.6.0 Andromeda search engine Perseus g:Profiler (version e109_eg56_p17_1d3191d) Nikon NIS elements software NIS Elements Denoise.ai CeAid Illumina NovaSeq Control Software RNA STAR Version 2.7.8a htseq (Version 0.9.1) samtools (Version 1.7) DESeq2 GSEA software (v.4.3.2)

For manuscripts utilizing custom algorithms or software that are central to the research but not yet described in published literature, software must be made available to editors and reviewers. We strongly encourage code deposition in a community repository (e.g. GitHub). See the Nature Portfolio [guidelines for submitting code & software](#) for further information.

Data

Policy information about [availability of data](#)

All manuscripts must include a [data availability statement](#). This statement should provide the following information, where applicable:

- Accession codes, unique identifiers, or web links for publicly available datasets
- A description of any restrictions on data availability
- For clinical datasets or third party data, please ensure that the statement adheres to our [policy](#)

All RNA sequencing data file are available on NCBI Bioproject #PRJNA966212. Microarray data files are available on the PUMAdb <http://puma.princeton.edu> as experiment set #7368. Proteomics data are available on PRIDE as Accession #PXD048296. UniProt/Swiss-Prot sequence database (v. 2019_09) was used to identify proteins for proteomics analyses.

Research involving human participants, their data, or biological material

Policy information about studies with [human participants or human data](#). See also policy information about [sex, gender \(identity/presentation\), and sexual orientation](#) and [race, ethnicity and racism](#).

Reporting on sex and gender	<input type="text" value="n/a"/>
Reporting on race, ethnicity, or other socially relevant groupings	<input type="text" value="n/a"/>
Population characteristics	<input type="text" value="n/a"/>
Recruitment	<input type="text" value="n/a"/>
Ethics oversight	<input type="text" value="n/a"/>

Note that full information on the approval of the study protocol must also be provided in the manuscript.

Field-specific reporting

Please select the one below that is the best fit for your research. If you are not sure, read the appropriate sections before making your selection.

- Life sciences Behavioural & social sciences Ecological, evolutionary & environmental sciences

For a reference copy of the document with all sections, see [nature.com/documents/nr-reporting-summary-flat.pdf](https://www.nature.com/documents/nr-reporting-summary-flat.pdf)

Life sciences study design

All studies must disclose on these points even when the disclosure is negative.

Sample size	No statistical methods were used to predetermine sample size. Sample sizes were determined for each experiment based on the standard for previously published and optimized assays (For lifespan assays, Murphy et al. Nature (2003). For reproductive span, late-mating, and oocyte quality assays, Luo et al., PLoS Genet. (2009); Luo et al., Cell (2010); Templeman et al., Curr Biol. (2018)).
Data exclusions	No data were excluded from the study.
Replication	All experiments were replicated using independent biological experiments (performed/collected on different days). At least 3 biological replicates were performed. All attempts at replication were successful.
Randomization	Worms were randomly selected for each experiment for placement into the different experimental groups. This was achieved by randomly pipetting populations of worms into different groups from pooled starting/growth plates. Alternatively, worms were randomly picked from starting plates onto experimental plates representing different conditions.
Blinding	Images used for oocyte quality analysis were blindly scored. Blinding was not performed for other experiments in the manuscript. This was due to the need to maintain proper treatment conditions for each strain throughout the experiment.

Reporting for specific materials, systems and methods

We require information from authors about some types of materials, experimental systems and methods used in many studies. Here, indicate whether each material, system or method listed is relevant to your study. If you are not sure if a list item applies to your research, read the appropriate section before selecting a response.

Materials & experimental systems

n/a	Involvement
<input type="checkbox"/>	<input checked="" type="checkbox"/> Antibodies
<input checked="" type="checkbox"/>	<input type="checkbox"/> Eukaryotic cell lines
<input checked="" type="checkbox"/>	<input type="checkbox"/> Palaeontology and archaeology
<input type="checkbox"/>	<input checked="" type="checkbox"/> Animals and other organisms
<input checked="" type="checkbox"/>	<input type="checkbox"/> Clinical data
<input checked="" type="checkbox"/>	<input type="checkbox"/> Dual use research of concern
<input checked="" type="checkbox"/>	<input type="checkbox"/> Plants

Methods

n/a	Involvement
<input checked="" type="checkbox"/>	<input type="checkbox"/> ChIP-seq
<input checked="" type="checkbox"/>	<input type="checkbox"/> Flow cytometry
<input checked="" type="checkbox"/>	<input type="checkbox"/> MRI-based neuroimaging

Antibodies

Antibodies used

Anti-Histone H3 antibody - Nuclear Marker and ChIP Grade, Abcam (ab1791). Used at 1:5,000. For species validation, refer to Maures et al., Aging Cell (2011).
 Anti-ATP5A antibody [15H4C4] - Mitochondrial Marker, Abcam (ab14748). Used at 1ug/ml. For species validation, refer to Wei & Ruvkun PNAS (2020).
 Anti- α -Tubulin antibody, Mouse monoclonal. Sigma (T6074). Used at 0.5ug/ml. For species validation, refer to Brosnan et al., Nat. Communications (2021).
 Goat Anti-Mouse IgG H&L (HRP). Abcam (ab205719). Used at 1:10,000.
 Goat Anti-Rabbit IgG H&L (HRP). Abcam (ab6721). Used at 1:10,000.

Validation

Antibodies were validated using the predicted size of reactivity with the target protein, subcellular localization based on information from the manufacturer's website, and for *C. elegans* validation, using the references listed above.

Animals and other research organisms

Policy information about [studies involving animals](#); [ARRIVE guidelines](#) recommended for reporting animal research, and [Sex and Gender in Research](#)

Laboratory animals

C. elegans (N2 strain background) were used throughout the study. Specific mutant strains are specified in Supplementary Table 5. Ages of animals are noted in the figure legends, with experimental treatments starting on Day 1 of adulthood.

Wild animals

No wild animals were used in the study.

Reporting on sex

Hermaphrodites were used to study reproductive oocyte aging. Males were used in the study for mating purposes, as noted.

Field-collected samples

No field-collected samples were used in the study.

Ethics oversight

No ethical oversight was required since *C. elegans* are invertebrates.

Note that full information on the approval of the study protocol must also be provided in the manuscript.